

RA3100 Viewer

Instruction Manual

AND

A&D Company, Ltd.

CAUTION

- (1) Turn off the power when the operation is abnormal.
If it is impossible to trace the causes of an abnormal operation, please contact our sales representative.
- (2) The contents of this manual are subject to change without notice.
- (3) This manual is copyrighted with all rights reserved. This manual may not be reproduced, modified, or translated without the written permission of A&D Company, Limited. No parts of this manual may be transcribed without permission.
- (4) Please let us know if there are any points that are unclear or missing in this manual.
- (5) A&D Company, Limited. will not be held responsible for any damages or loss of income caused by the operation of this device or any direct, indirect, special, or inevitable damages caused by defects in the product, even if there is notice that the corresponding damages may occur. We will also not be held responsible for any third party claims of rights. At the same time, we will not be held responsible for any loss of data. We will not be held responsible for any of such points as those indicated in item (4).

© 2021 A&D Company, Limited.

- Omnice is a registered trademark of A&D Company, Limited.
- Microsoft Windows, Word, and Excel are trademarks or registered trademarks of Microsoft Corporation in the United States and other countries.
- Intel and Intel Core are trademarks of Intel Corporation in the United States and/or other countries.
- Product names and company names in this manual are trademarks or registered trademarks of their respective owners in Japan and other countries.

Introduction



RA3100 Viewer is computer software for displaying the waveforms of recorded data exported to external media from our data acquisition product OMNIACE RA3100.



RA3100

Symbols in This Manual

Terms and symbols used in this manual denote as follows.

<div style="border: 1px solid black; padding: 5px; display: inline-block;">Note</div>	<p>This indicates a condition or practice that could result in converted files being overwritten if the software is misused due to neglect of a Note, as well as measurement limitations and additional explanations.</p>
	<p>Reference page</p>
	<p>A tap is the act of lightly touching an item such as a key displayed on the screen with a finger. Example Used for selecting or setting screen keys.</p>
<div style="border: 1px solid black; display: inline-block; width: 20px; height: 10px; vertical-align: middle;"></div> key	<p>Enclosed characters represent a key name on the operation panel. Example OK key</p>
【 】 key	<p>Text enclosed in 【 】 indicates touch panel keys displayed on the screen. Example 【CH】 key</p>
[] screen	<p>Text enclosed in [] indicates the text of items on the screen. Example [Main] screen</p>

CONTENTS

Introduction	3
Symbols in This Manual	3
CONTENTS	4
1. Environment	5
1.1. System Requirements	5
1.2. Setup Method	5
1.2.1. Windows Settings	5
1.2.2. Extracting the ZIP File	7
1.3. Installation Method	8
2. Functions	9
2.1. Differences between the RA3100 and RA3100 Viewer	9
2.1.1. Hamburger Button	9
2.2. Mouse Operations (Used as Substitute for the Touch Panel and Jog Dial)	10
2.2.1. Basic Operations	10
3. Usage Method	12
3.1. Flow of Operations	12
3.2. Copying Recorded Data from the RA3100 to a USB Stick	13
3.2.1. RA3100 Main Unit	13
3.3. Copying Recorded Data on a USB Stick to a Windows PC	14
3.4. Starting the Software	15
3.5. Configuring the Recorded Data Folder	15
3.6. Specifying Replay Data	16
3.7. Replay Function and Operations	16
3.8. Capturing and Printing Waveform Images	17
3.9. Saving Display Settings	17
3.10. Closing the RA3100 Viewer	17

1. Environment

This section describes the system requirements and installation procedure.

1.1. System Requirements

Item	Contents
Operating system	Windows 10 x64 (64-bit) (Ver1809 or later) Japanese, English, Korean, Chinese (Traditional) For other languages, the software is displayed in English.
CPU	Intel Core i series
Memory	1 GB or more of free memory
Display	Resolution of 1280 x 1024 or higher

Perform installation and execute the RA3100 Viewer using an **account with administrator privileges**. The RA3100 Viewer does not support multiple accounts. It does not operate with accounts other than the account used for installation.

1.2. Setup Method


Download the RA3100ViewerSetup_vx.x.x.zip file from our website.

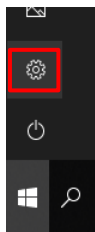
Japan: https://www.aandd.co.jp/support/soft_download/industrial.html

Overseas: https://www.aandd.jp/support/industrial/soft_download.html

1.2.1. Windows Settings

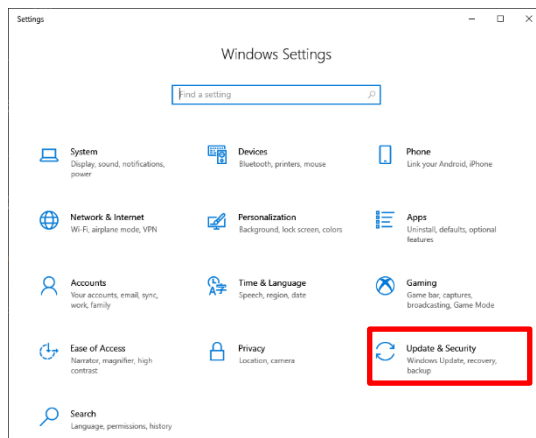
Windows settings must be configured before installing the software.

Click the  button in the Windows Start menu.



The [Windows Settings] screen is displayed.

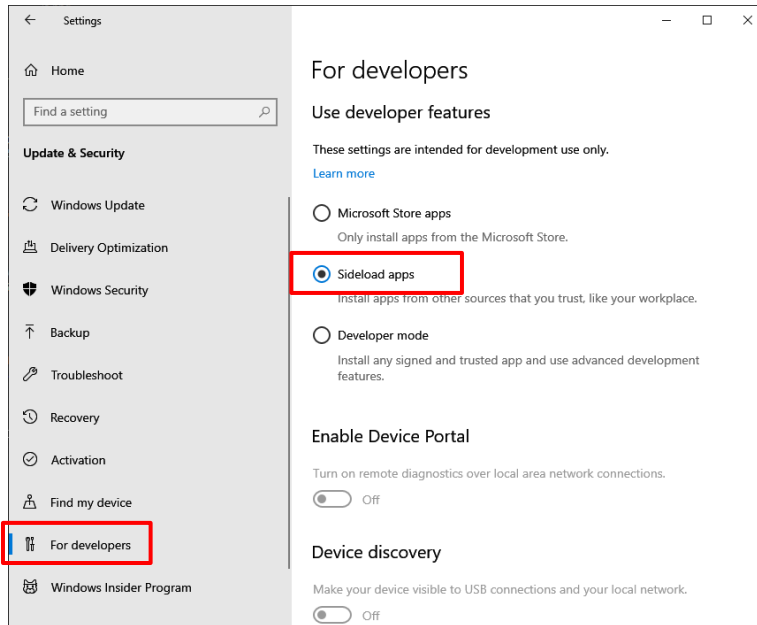
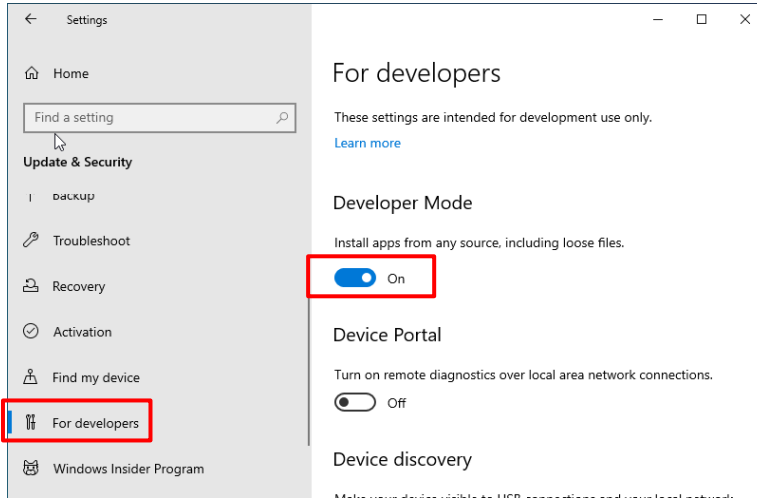
Click [Update & Security] to open the [Update & Security] screen.



The settings differ according to the version of Windows.

Enable [Developer Mode] or select [Sideload apps].

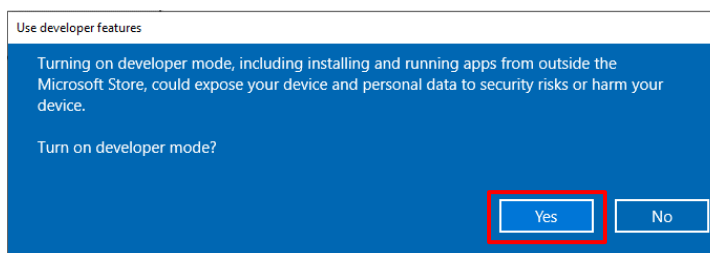
If [Developer mode] is set instead of [Sideload apps], [Developer mode] is acceptable.



The [Turn on developer mode?] dialog is displayed.

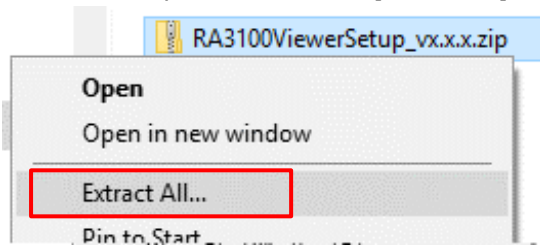
Click the [Yes] button.

If you selected [Sideload apps], the [Turn on app sideloading?] dialog is displayed.



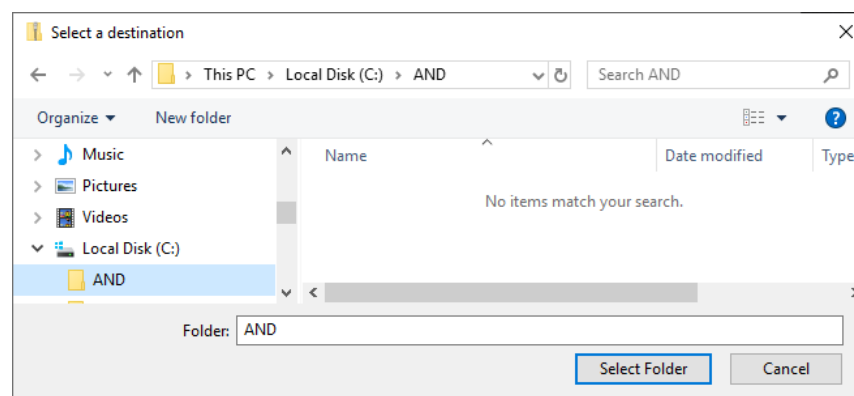
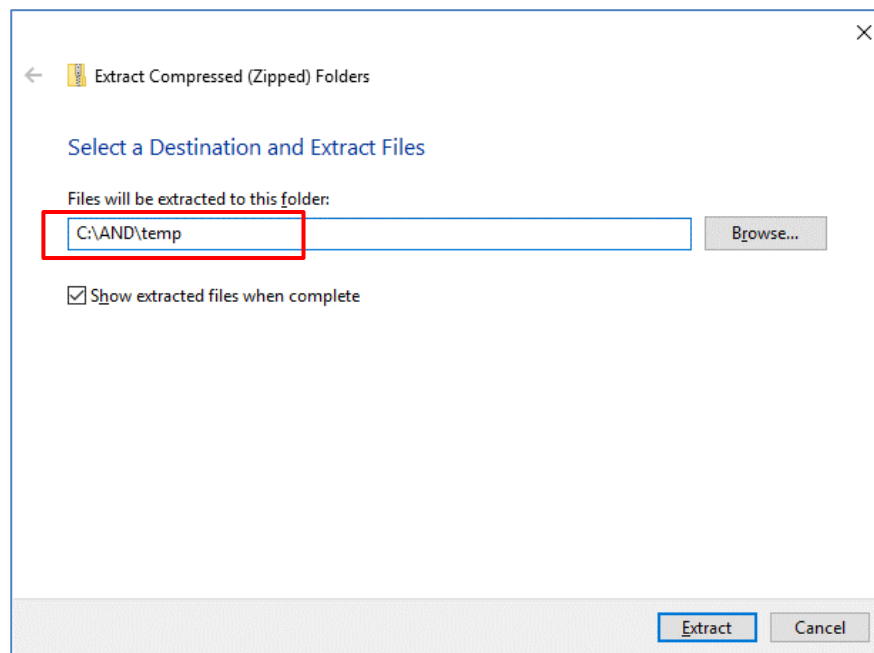
1.2.2. Extracting the ZIP File

Use the standard software of Windows 10 or other compression/extraction software to extract the file. The procedure for using the standard software of Windows 10 is indicated below. Right-click the ZIP file in Explorer, and select [Extract All].

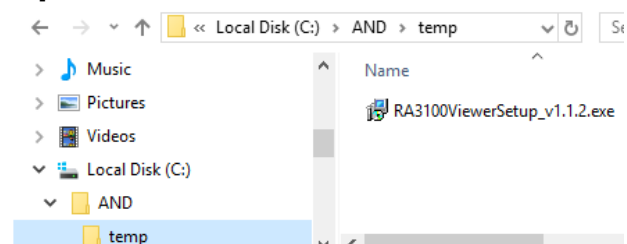


The [Extract Compressed (Zipped) Folders] screen is displayed.

Specify the destination by entering a path in the area above indicated in red or clicking the [Browse] button.



Click the [Extract] button to extract the files.

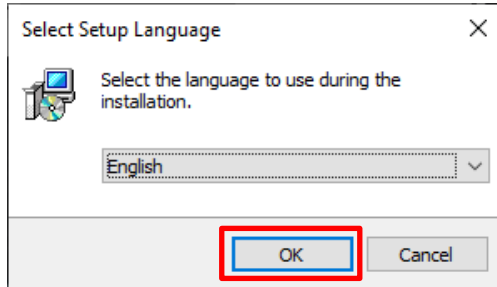


1.3. Installation Method

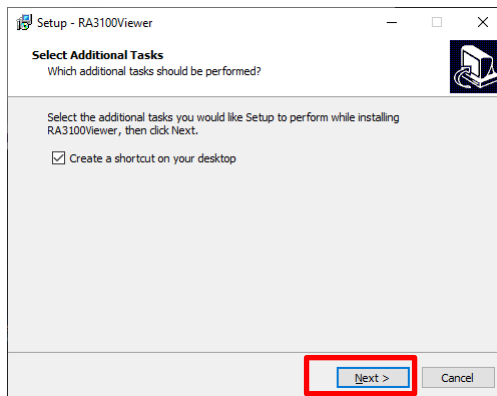
Double-click the RA3100ViewerSetup_vx.x.x.exe file extracted in the previous step.

The [Select Setup Language] screen is displayed.

Click the [OK] button.



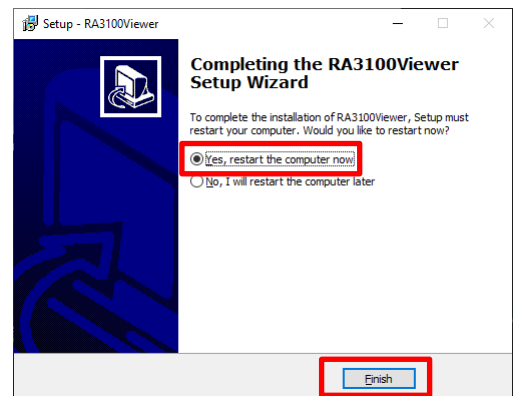
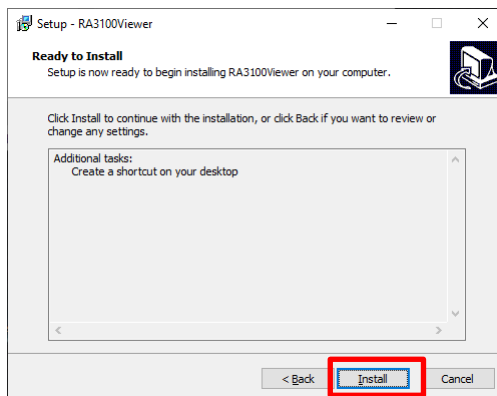
To create a shortcut on the desktop, select [Create a shortcut on your desktop], and click [Next].



Click the [Install] button to start installation.

When the [Completing the RA3100Viewer Setup Wizard] screen is displayed, installation is complete.

Select [Yes, restart the computer now], and click [Finish].



2. Functions

Operate the playback function of the RA3100 main unit (to perform operations such as displaying waveforms and searching) on a Windows PC.

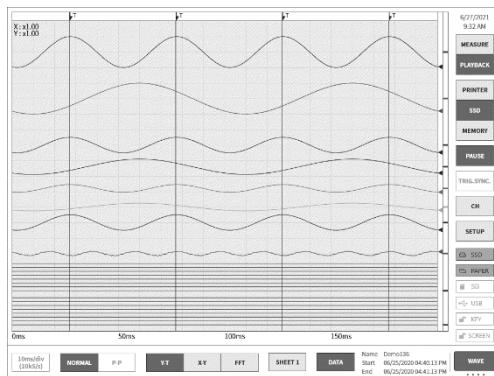
For details on the playback function, see the instruction manual included with the main unit.

2.1. Differences between the RA3100 and RA3100 Viewer

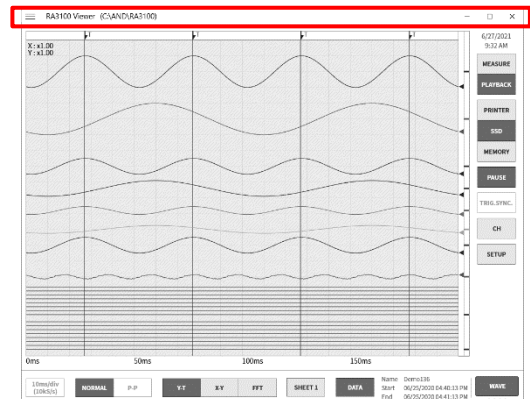
An example of displaying the waveform for the same recorded data with the RA3100 and RA3100 Viewer is indicated below.

The differences in functions are as follows.

- (1) The RA3100 Viewer has a title bar and hamburger button on the top of the screen.
- (2) The touch panel and jog dial operations of the RA3100 are performed using the mouse with the RA3100 Viewer.



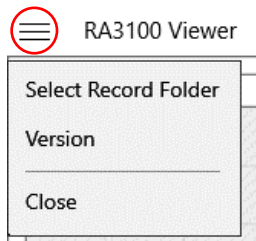
RA3100




RA3100 Viewer

2.1.1. Hamburger Button

The part circled in red on the top left of the [RA3100 Viewer] screen is called a "hamburger button". Click it to display the menu.



Menu	Description
Select Record Folder	Selects the recorded data folder. For details, see " 3.5. Configuring the Recorded Data Folder ".
Version	Displays the version information of this software.
	
Close	Closes the RA3100 Viewer.

2.2. Mouse Operations (Used as Substitute for the Touch Panel and Jog Dial)

2.2.1. Basic Operations

The Ctrl, Shift, and Alt keys on the keyboard can be combined with mouse wheel operations to configure settings and move or enlarge/reduce the waveform.

Press the Z key at the same time to reduce the step for updating. (This enables fine adjustment.)

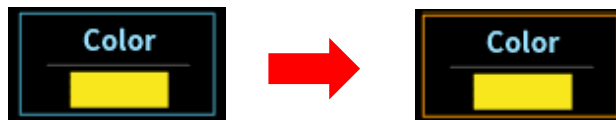
Example 1) Enlarging the waveform X axis with fine adjustment
 Press the Ctrl + Z keys and rotate the mouse wheel up

Example 2) Moving the waveform Y axis with coarse adjustment
 Press the Alt key and rotate the mouse wheel down

Note

- When the waveform cannot be moved, it means that there is no data that can be displayed.

Action	Mouse operation and behavior
Changing a setting (mouse wheel)	Click the CH button on the right side of the [RA3100 Viewer] screen to display the channel settings. Click a setting to change the frame to orange and enable the setting value to be changed using mouse wheel operations. For example, selecting [Color] enables the color to be changed and selecting [Disp. pos.] enables the ratio number of the display width to be changed.



Changing a setting (dialog)	Right-click a setting to display the dialog corresponding to that setting.
-----------------------------	--

- Selection palette dialog

Select a setting value to reflect the setting and close the dialog. Click outside the dialog to return without changing the setting.



- Number entry dialog

Operate the buttons on the screen or perform keyboard entry to enter a number. When performing keyboard entry, press the [Enter] key to reflect the setting value and close the dialog.



Action	Mouse operation and behavior	
Changing the X axis scale of the waveform	Ctrl key + rotate mouse wheel up:	Enlarge scale
	Ctrl key + rotate mouse wheel down:	Reduce scale
Changing the Y axis scale of the waveform	Shift key + rotate mouse wheel up:	Enlarge scale
	Shift key + rotate mouse wheel down:	Reduce scale
Moving the waveform in the X axis direction	Rotate mouse wheel up:	Move left
	Rotate mouse wheel down:	Move right
Moving the waveform in the Y axis direction	Alt key + rotate mouse wheel up:	Move up
	Alt key + rotate mouse wheel down:	Move down

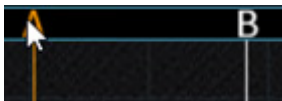
Click the cursor A or B mark above the waveform area to change the cursor line to orange. The specified cursor line can be moved by operating the mouse wheel.

Rotate mouse wheel up: Move left
 Rotate mouse wheel down: Move right

Moving the cursor



You can also drag the specified cursor line left or right to move it.



3. Usage Method

3.1. Flow of Operations

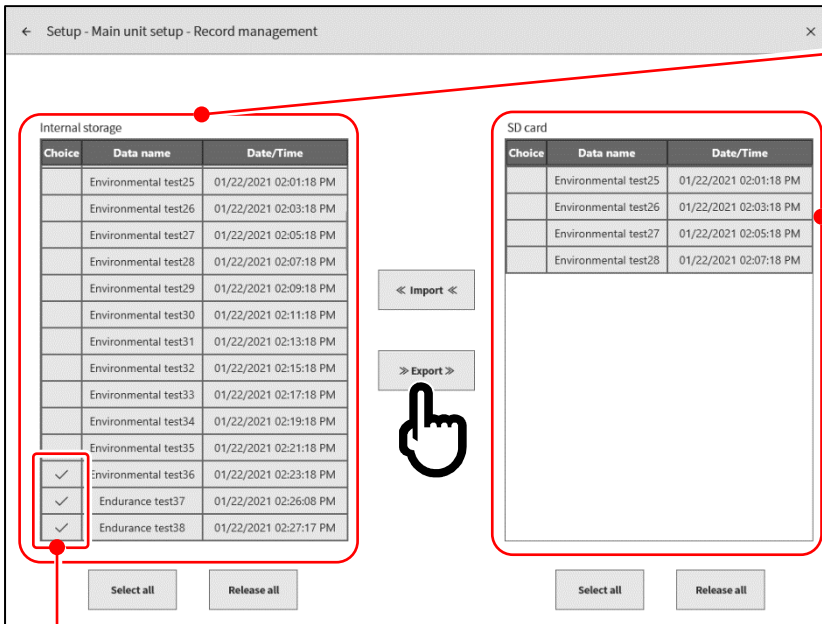
	Overview	Reference
Operation (1)	This operation is performed on the RA3100 main unit. The specified recorded data is copied to a USB stick or an SD memory card on a dedicated operation screen.	"3.2. Copying Recorded Data from the RA3100 to a USB Stick"
Operation (2)	This operation is performed on the RA3100 main unit. The operator inserts the USB stick or SD memory card into a Windows PC and manually copies the RA3100 folder in Explorer. Or, executes the software on the USB stick without copying the files.	"3.3. Copying Recorded Data on a USB Stick to a Windows PC"
Operation (3)	Start the RA3100 Viewer.	"3.4. Starting the Software"
Operation (4)	Specify the RA3100 folder from operation (2).	"3.5. Configuring the Recorded Data Folder"
Operation (5)	Select the data to replay from the recorded data.	"3.6. Specifying Replay Data"
Operation (6)	Perform operations such as enlarging and moving the waveform.	"3.7. Replay Function and Operations"
Operation (7)	This section describes the procedure for copying the waveform image to create a report.	"3.8. Capturing and Printing Waveform Images"
Operation (8)	You can change the waveform position and waveform color and overwrite the settings.	"3.9. Saving Display Settings"
Operation (9)	Closes the RA3100 Viewer.	"3.10. Closing the RA3100 Viewer"

3.2. Copying Recorded Data from the RA3100 to a USB Stick

Connect external media (such as an SD memory card or USB stick) to the "3.2.1. RA3100 Main Unit".

Tap the **[Import/Export]** key on the bottom right of the [Record management] screen to display the external media selection dialog and select the target external media.

Tap the **[OK]** key to switch to the [Import/Export] screen.



Recorded data list on internal SSD

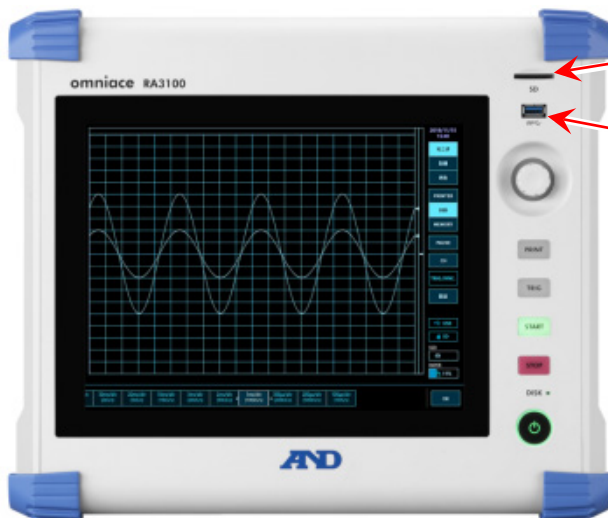
Recorded data list on external media

Place a check mark (✓) on the data to back up

Place a check mark (✓) in the selection field of the data to back up and tap the **[Export]** key in the center to export the recorded data.

3.2.1. RA3100 Main Unit

Front view



SD card slot

USB

USB

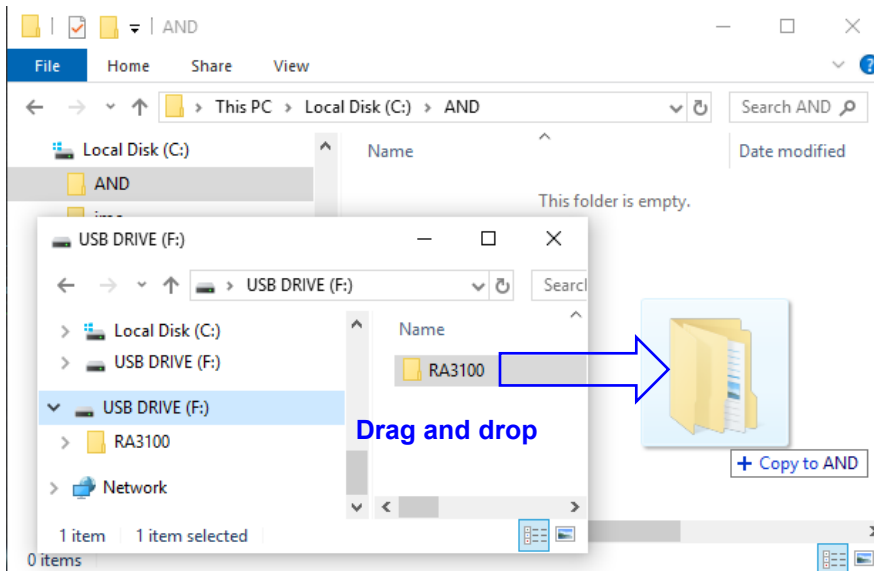


Right view

3.3. Copying Recorded Data on a USB Stick to a Windows PC

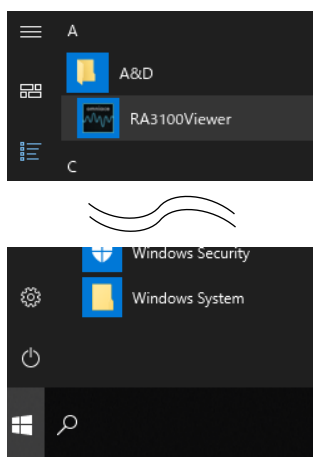
Connect the USB stick or SD card that the data was copied to in "[3.2. Copying Recorded Data from the RA3100 to a USB Stick](#)" to a Windows PC.

Copy the **entire "RA3100" folder** on the USB stick or SD card to a local disk in Explorer.



3.4. Starting the Software

Click the [A&D] - [RA3100Viewer] in the Windows Start menu.



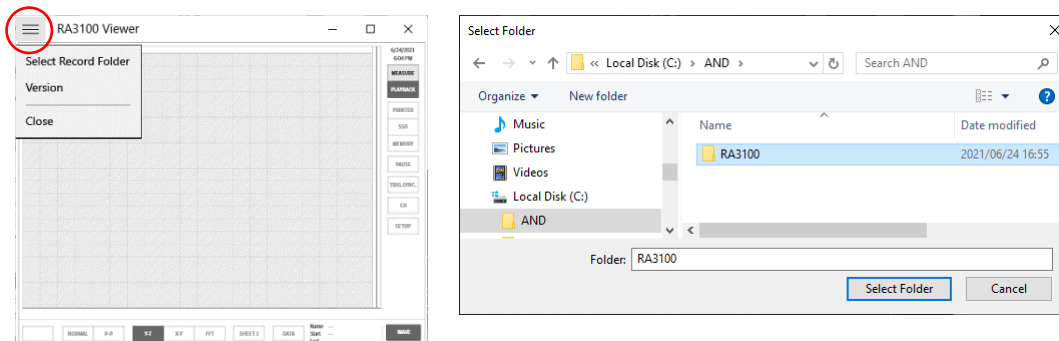
Note

- The display of the Windows Start menu differs according to the version of Windows and the environment settings.

3.5. Configuring the Recorded Data Folder

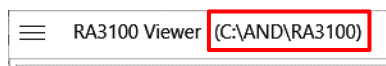
Click the hamburger button (circled in red) on the top left of the [RA3100 Viewer] screen.

Select [Select Record Folder] from the displayed menu to open the folder selection dialog.



Select the RA3100 folder, and press the [Select Folder] button.

The selected path is displayed in the title bar on the top of the screen.



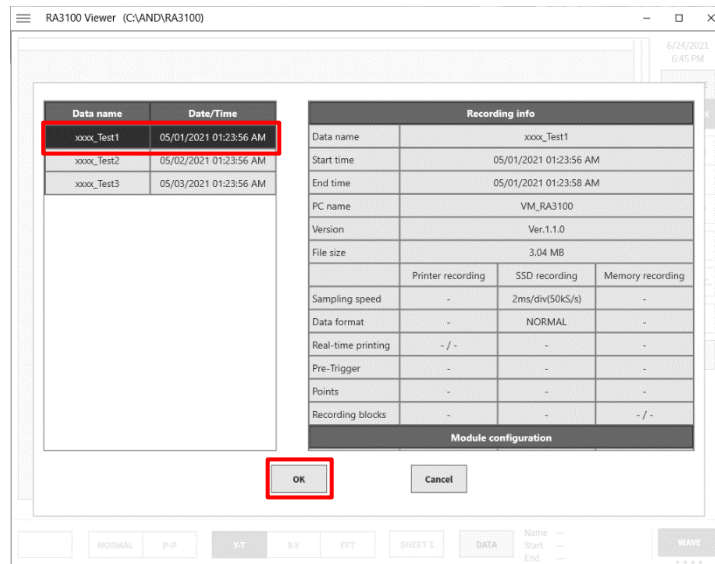
For information on the RA3100 folder, see "[3.3. Copying Recorded Data on a USB Stick to a Windows PC](#)".

3.6. Specifying Replay Data

Click the **DATA** button on the bottom right of the [RA3100 Viewer] screen.
The recorded data list is displayed.



Select recorded data from the data names on the left to display the recording information on the right.
Click the **OK** button to confirm the data to replay.



Note

- The **DATA** button is displayed when **WAVE** is displayed as the function on the bottom right of the screen.

Click **WAVE** to switch the functions in the following order.

WAVE ⇒ **THUMBNAIL** ⇒ **CURSOR** ⇒ **PENREC**

3.7. Replay Function and Operations

The replay function is the same as the RA3100 main unit. See the instruction manual included with the main unit.



Refer to "[2.2. Mouse Operations \(Used as Substitute for the Touch Panel and Jog Dial\)](#)", as there are differences between the input device of the RA3100 main unit and the PC.

3.8. Capturing and Printing Waveform Images

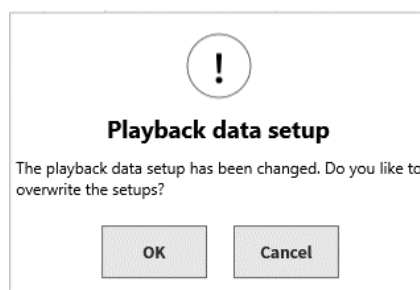
Use the standard Windows capture function. To print captured images, paste the image to an application such as Word or Excel and use the print function of that application.

Capture range	Operation
Entire [RA3100 Viewer] screen	You can press the Alt + PrintScreen keys with the [RA3100 Viewer] screen on top to copy the entire screen to the clipboard.
Part of [RA3100 Viewer] screen	Press the Windows + Shift + S keys to specify a range to copy to the clipboard.

3.9. Saving Display Settings

The save confirmation dialog is displayed when performing the operation in "[3.6. Specifying Replay Data](#)" or "[3.10. Closing the RA3100 Viewer](#)".

Click the button to overwrite the settings such as the waveform position and waveform color.



3.10. Closing the RA3100 Viewer

Select [Close] from the "[2.1.1. Hamburger Button](#)" menu.

Or, click [X] on the top right of the [RA3100 Viewer] screen.

Viewer
RA3100

Instruction Manual

1WMPD4004532

1st Edition



A&D Company, Limited

3-23-14 Higashi-Ikebukuro, Toshima-ku, Tokyo 170-0013, JAPAN
Telephone: [81] (3) 5391-6132 Fax: [81] (3) 5391-1566

A&D ENGINEERING, INC.

1756 Automation Parkway, San Jose, California 95131, U.S.A.
Telephone: [1] (408) 263-5333 Fax: [1] (408)263-0119

A&D INSTRUMENTS LIMITED

Unit 24/26 Blacklands Way, Abingdon Business Park, Abingdon, Oxfordshire OX14 1DY United Kingdom
Telephone: [44] (1235) 550420 Fax: [44] (1235) 550485

A&D AUSTRALASIA PTY LTD

32 Dew Street, Thebarton, South Australia 5031, AUSTRALIA
Telephone: [61] (8) 8301-8100 Fax: [61] (8) 8352-7409

A&D KOREA Limited

한국에이.엔.디(주)
서울특별시 영등포구 국제금융로6길33 (여의도동) 맨하탄빌딩 817 우편 번호 07331
(817, Manhattan Bldg., 33. Gukjegeumyung-ro 6-gil, Yeongdeungpo-gu, Seoul, 07331 Korea)
전화: [82] (2) 780-4101 팩스: [82] (2) 782-4264

OOO A&D RUS

ООО "ЭЙ энд ДИ РУС"
Почтовый адрес:121357, Российская Федерация, г.Москва, ул. Верейская, дом 17
Юридический адрес: 117545, Российская Федерация, г. Москва, ул. Дорожная, д.3, корп.6, комн. 86
(121357, Russian Federation, Moscow, Vereyskaya Street 17)
тел.: [7] (495) 937-33-44 факс: [7] (495) 937-55-66

A&D Instruments India Private Limited

ऐ&डी इन्स्ट्रुमेन्ट्स इण्डिया प्रा० लिमिटेड
509, उद्योग विहार , फेस -5, गुडगांव - 122016, हरियाणा , भारत
(509, Udyog Vihar, Phase-V, Gurgaon - 122016, Haryana, India)
फोन : [91] (124) 4715555 फैक्स : [91] (124) 4715599

A&D SCIENTECH TAIWAN LIMITED. A&D台灣分公司 艾安得股份有限公司

台灣台北市中正區青島東路5號4樓
(4F No.5 Ching Tao East Road, Taipei Taiwan R.O.C.)
Tel : [886](02) 2322-4722 Fax : [886](02) 2392-1794

A&D INSTRUMENTS (THAILAND) LIMITED

บริษัท เอ แอนด์ ดี อินสตรูमेंท์ (ไทยแลนด์) จำกัด
168/16 หมู่ที่ 1 ตำบลรังสิต อำเภอธัญบุรี จังหวัดปทุมธานี 12110 ประเทศไทย
(168/16 Moo 1, Rangsit, Thanyaburi, Pathumthani 12110 Thailand)
Tel : [66] 20038911