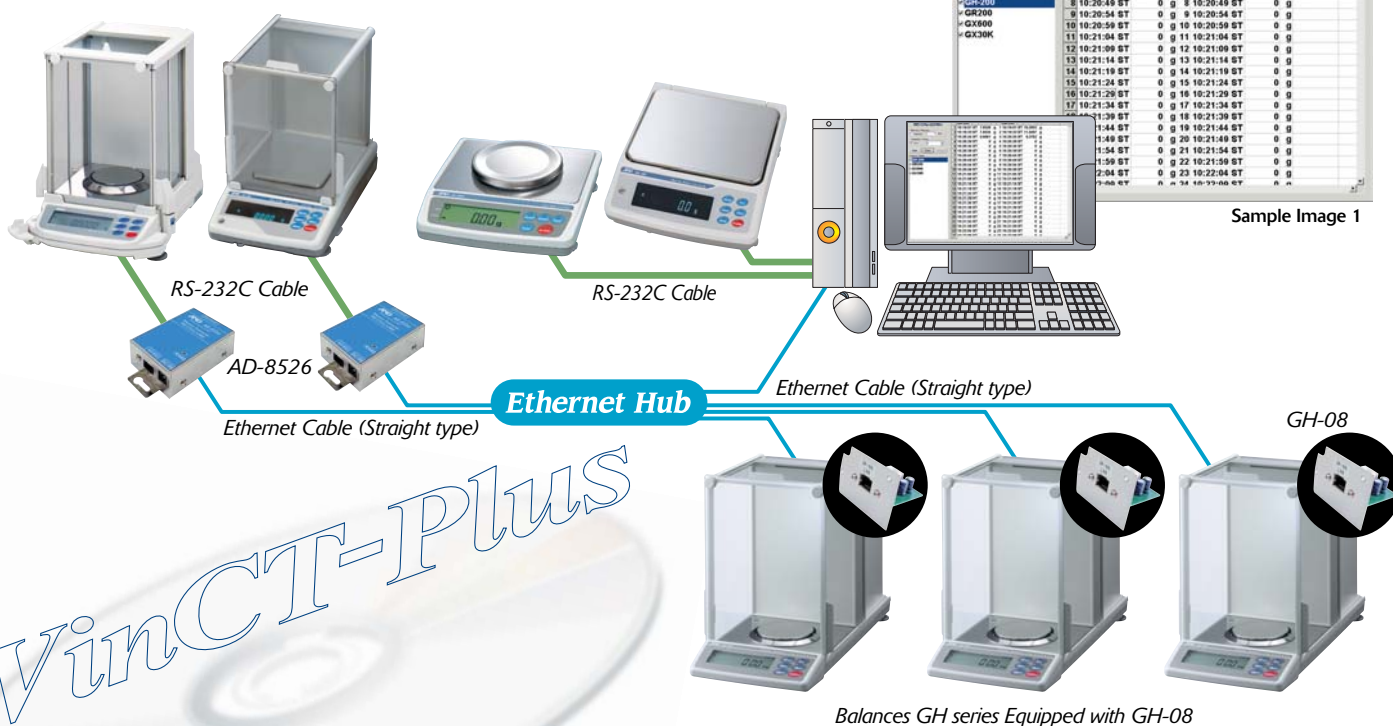


WinCT-Plus with Ethernet Interface/Converter Windows Communication Tools

Ethernet Connection Now Available with A&D's Balances!!

WinCT-Plus is innovative Windows communication software, which can comprehensively display acquired data from both A&D balances and weighing instruments. A&D has introduced an original solution for complex data transmission between a PC and multiple balances. With Win-CT Plus, data can be transmitted using an Ethernet network or an RS-232C cable or both. This software requires GH-08 Ethernet Interface (GH series only) or AD4212A-08 Ethernet Interface (AD-4212A series only) or AD-8526 RS/Ethernet Converter for multiple data acquisition.

System diagram for data acquisition from multiple balances



Software for multi-data acquisition from multiple balances

RsMulti

This software enables data acquisition from multiple balances through an Ethernet network, using a PC and GH-08 Ethernet Interface (GH series only) or AD4212A-08 Ethernet Interface (AD-4212A only) or AD-8526 RS/Ethernet Converter. Sample image 1 above shows simultaneous data acquisition from the GH-200, GR-200, GX-600 and GX-30K.

DeviceInstaller

"DeviceInstaller" is the software used to set the IP address and other configuration information of A&D balances.

ComPort Redirector

"ComPort Redirector" is software that enables virtual serial communication from the balances, which are connected to an Ethernet network (Virtual COM port). With the virtual COM port connection, serial communication software such as RsCom or your original serial communication software can be used directly.

RsMulti features

This software enables multi-data acquisition from A&D's electric balances, weighing instruments or platform scales over an Ethernet network or through an RS-232C connection.

■ **Enables data acquisition from multiple weighing instruments with a single computer.**

■ **Ethernet network and RS-232C connection can be used simultaneously.**

(e.g. It is possible to simultaneously connect three weighing instruments using an Ethernet network and two others through an RS-232C cable.)

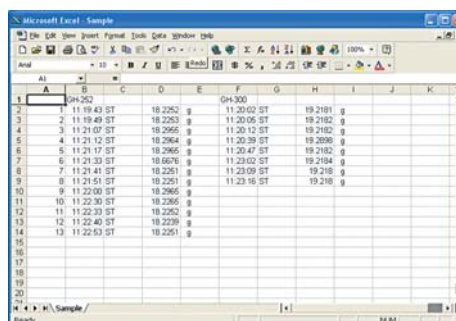
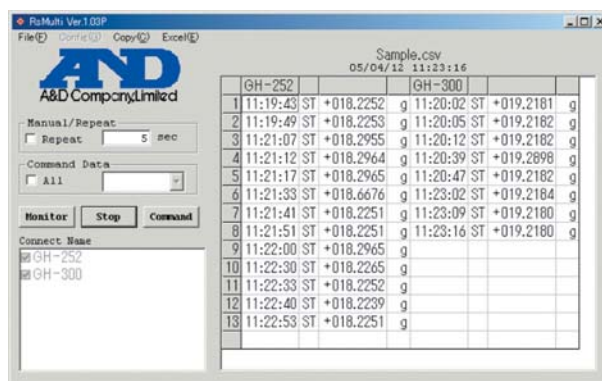
■ **Weighing instruments can be controlled by sending commands from the computer.**

■ **Data is transmitted to the PC by pressing the PRINT key on the weighing instrument.**

■ **Recorded data can be comprehensively formatted in Microsoft Excel.**

(Microsoft Excel should be installed in advance.)

• With the click of a button (Excel(E) - Open), acquired measurement data can be displayed in Microsoft Excel.



SYSTEM REQUIREMENTS for WinCT-Plus

1. Computer OS Microsoft Windows 98/ME/2000/XP

- CPU equivalent to Pentium class or above recommended
- RAM at least 32MB memory recommended
- Hard disk space of at least 50MB required
- CRT resolution of at least 800 x 600 recommended
- CD-ROM drive
- LAN port

2. Via Ethernet

- Ethernet hub
- A&D balances with RS-232C interface
 - AD-8526
 - RS-232C cable/ Ethernet cable (straight cable)
- Analytical balance GH series
 - GH-08
 - Ethernet cable (straight cable)
- Precision weighing sensor AD-4212A series
 - AD4212A-08
 - Ethernet cable (straight cable)

Note: If Ethernet hub is not used, cross cables should be used for LAN cabling.

3. Via RS-232C cable (ComPort)

- A&D balances with RS-232C interface
- RS-232C cable

WinCT-Plus comes with the following products:

AD-8526 RS/Ethernet Converter

Note: This product can be connected with all A&D balances and weighing instruments equipped with an RS-232C interface. (AD-8526 includes an RS-232C cable.)



GH-08 Ethernet Interface

Note: This optional GH-08 is only suitable for use with A&D's Analytical Balance GH series.



AD4212A-08 Ethernet Interface

Note: This optional AD4212A-08 is only suitable for use with A&D's Precision Weighing Sensor AD-4212A series.



A&D

...Clearly a Better Value

A&D Company, Limited

3-23-14 Higashi-Ikebukuro, Toshima-ku, Tokyo 170-0013 JAPAN
Telephone:[81](3) 5391-6132 Fax:[81](3) 5391-6148
http://www.aandd.jp

A&D ENGINEERING, INC.

1555 McCandless Drive, Milpitas, CA. 95035 U.S.A.
Telephone:[1](408) 263-5333 Fax:[1](408) 263-0119

A&D MERCURY PTY. LTD.

32 Dew Street, Thebarton, South Australia 5031 AUSTRALIA
Telephone:[61](8) 8301-8100 Fax:[61](8) 8352-7409

A&D INSTRUMENTS LTD.

Unit 24/26 Blacklands Way Abingdon Business Park,
Abingdon, Oxon OX14 1DY United Kingdom
Telephone:[44](1235) 550420 Fax:[44](1235) 550485

<German Sales Office>

Große Straße 13 b 22926 Ahrensburg GERMANY
Telephone:[49](0) 4102 459230 Fax:[49](0) 4102 459231

A&D KOREA Limited

Manhattan Bldg. 8F, 36-2 Yoido-dong, Youngdeungpo-gu, Seoul, KOREA
Telephone:[82](2) 780-4101 Fax:[82](2) 782-4280