

GX-A / GF-A series USB interface  
How to install the Virtual COM mode driver

---

1. Introduction	
2. Changing the internal setting of the balance	2
3. How to install the driver	
3-1. For Windows 10	2
3-2. For Windows 8.1 , 7 , Vista	3
3-3. For Windows XP	12

---

1. Introduction

The USB interface that comes standard with the GX-A / GF-A is set to Quick USB mode at the time of shipment. Changing the internal settings of the GX-A / GF-A from Quick USB mode to Virtual COM mode enables bidirectional communication between a personal computer and the balance, allowing the balance to be controlled from a personal computer.

In order to connect the GX-A / GF-A to the PC and communicate with the software (WinCT series), you need to check the COM port number (COM \*\*). For details, please refer to the “Guide to WinCT Software and How to Check PC COM Ports” and the “WinCT Operation Manual” on our website (<http://www.aandd.jp/>).

This manual describes the installation of the driver for Virtual COM mode.

## 2. Changing the internal settings of the balance

- (1) Set the balance to weighing mode  $^{\circ} 0.000 \text{ g}$  .
- (2) Press and hold the **SAMPLE** key to display  $b 85 F n c$  .
- (3) Press the **SAMPLE** key several times and press the **PRINT** key with  $U5b$  .
- (4)  $U F n c$  is displayed. Press **RE-ZERO** key several times to display  $U F n c 1/00$  .
- (5) Press the **PRINT** key to return to the internal settings.
- (6) Press the **CAL** key from  $8 P F n c$  to return to weighing display.

## 3. How to install the driver

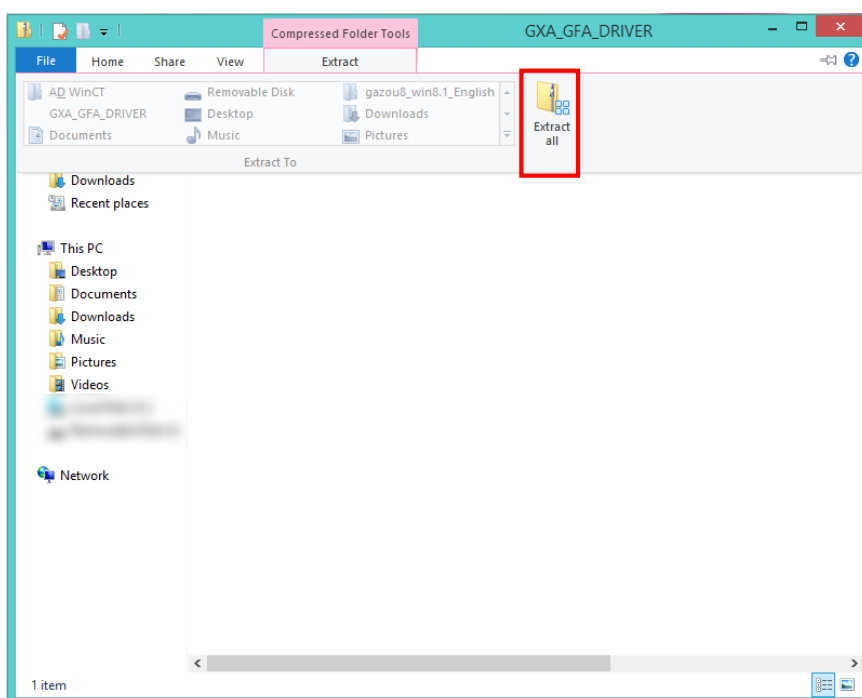
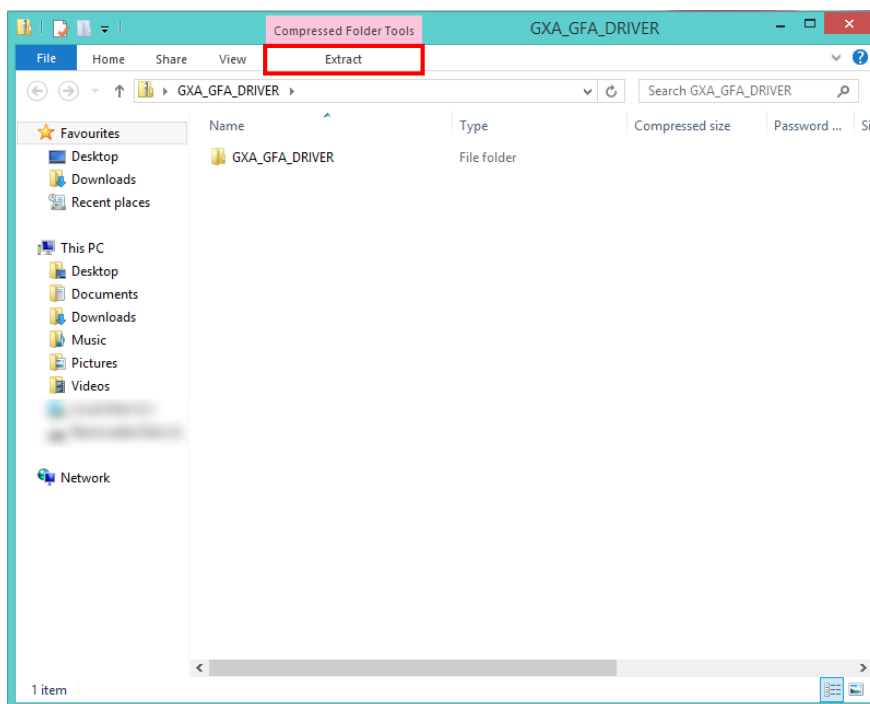
### 3-1. For Windows 10

- (1) When you connect the GX-A / GF-A to the computer, the driver is installed automatically.
- (2) When the installation is completed, the screen closes automatically.  
The COM port name will be "USB serial device".

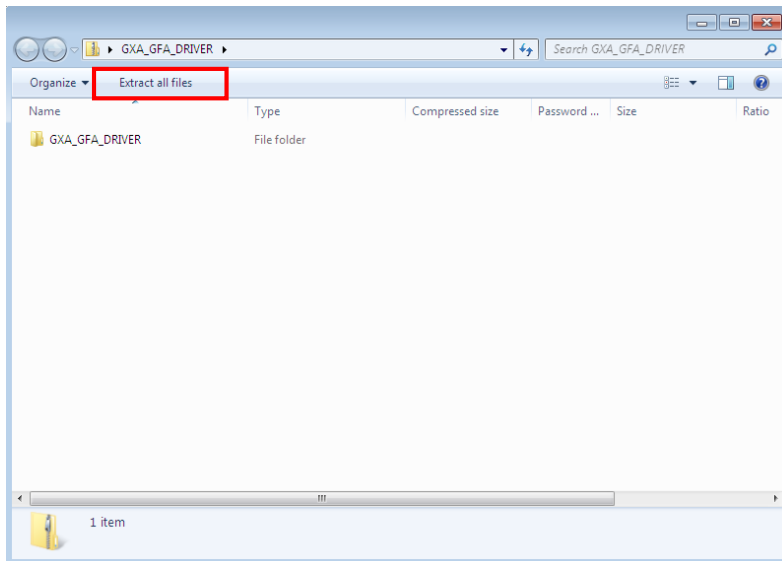
3-2. For Windows 8.1, Windows 7, Vista

- (1) Extract the compressed folder "GXA\_GFA\_DRIVER" downloaded from our website (<http://www.aandd.jp/>).

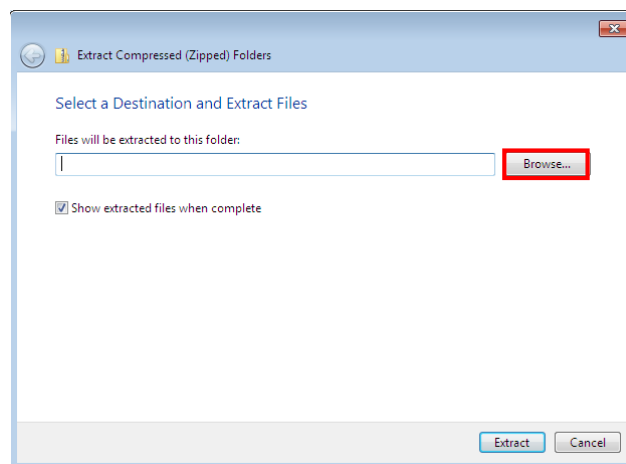
- For Windows 8.1...Open the downloaded folder, click the [Extract] tab under Compressed Folder Tools, and click [Extract all].



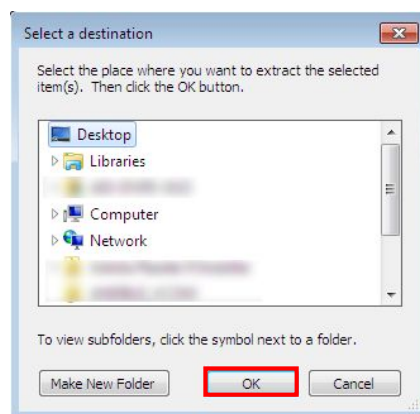
- For Windows 7, Vista...Open the downloaded folder and click [Extract all files].



- (2) The following screen appears. Click [Browse]. (The screen is an example from Windows 7)

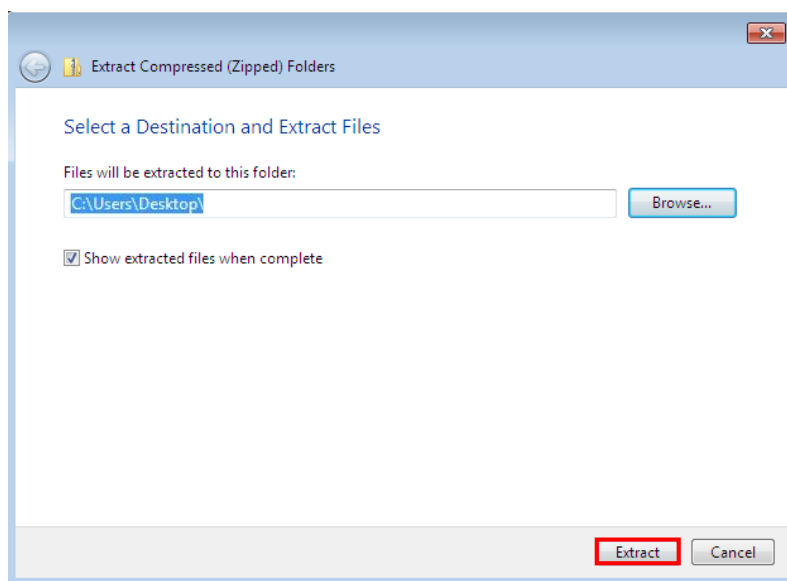


- (3) Select the destination to extract and click [OK].



Example of  
deploying to  
the desktop

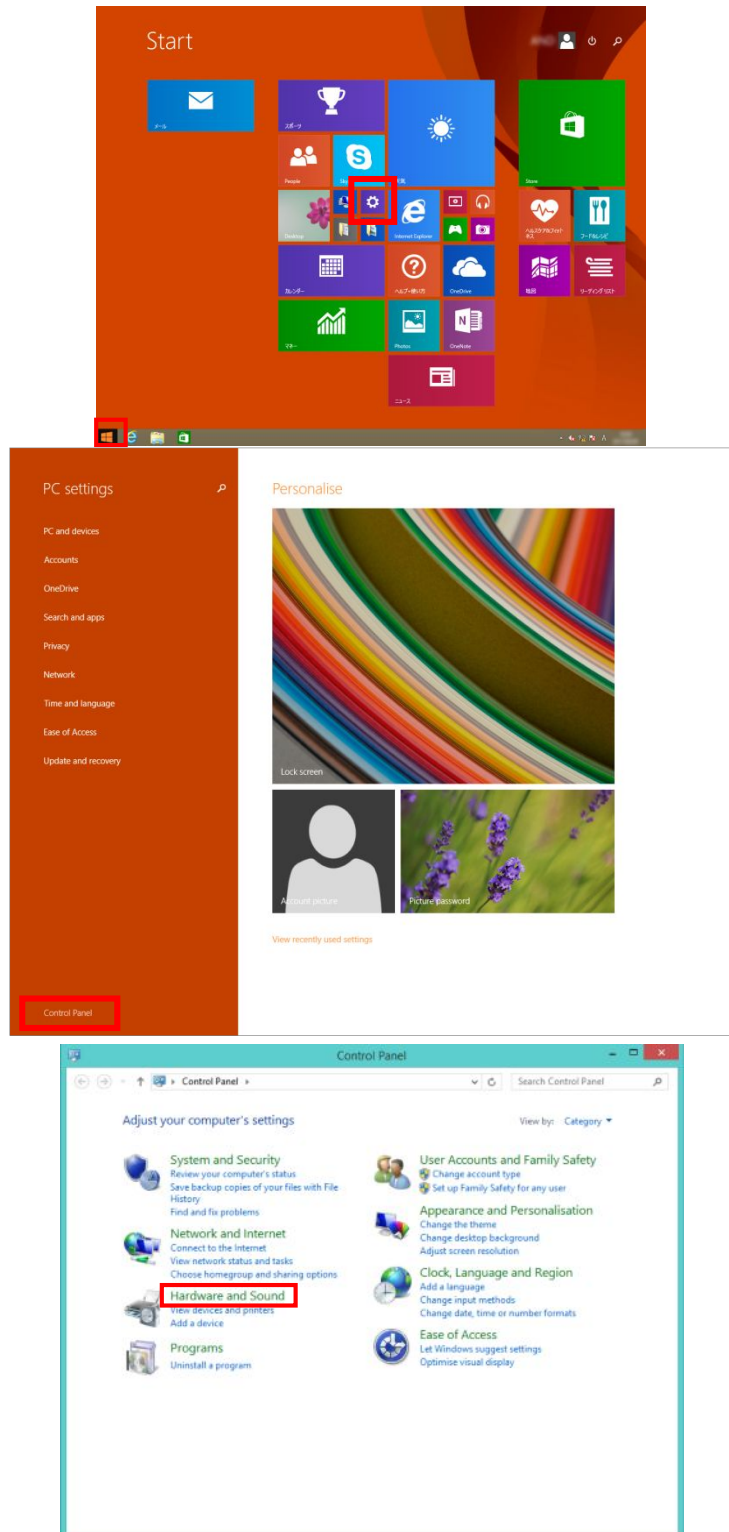
- (4) When you return to the screen to specify the location of the file, click [Extract].
- ※ The user name will differ depending on your PC.



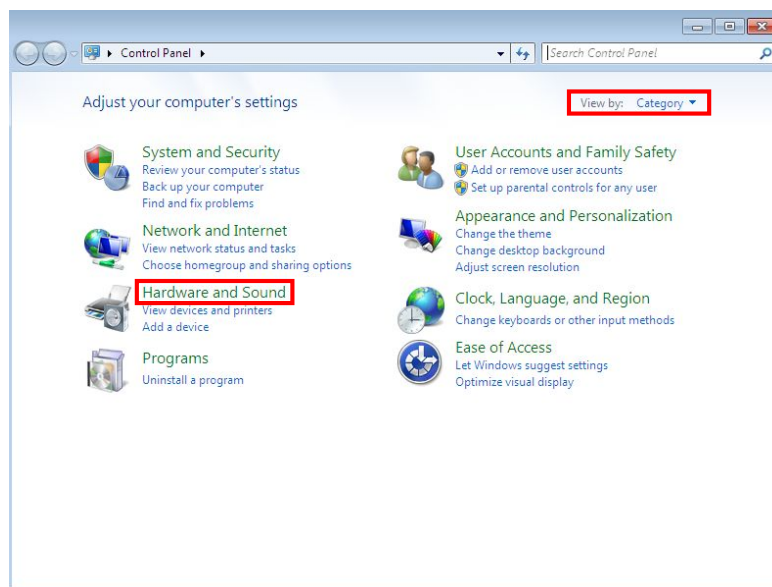
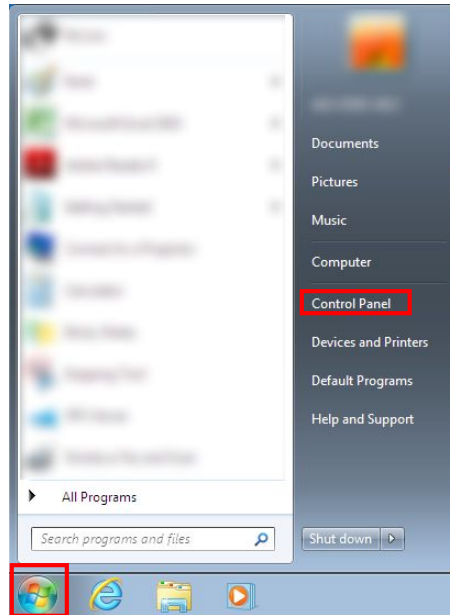
- (5) When the decompression of the compressed folder is completed, the window opens. You can close this window and the Extract Compressed (Zipped) Folders window.
- (6) Plug the supplied USB cable into the USB interface on the back of the GX-A / GF-A, and connect it to the computer.

(7) Open [Hardware and Sound].

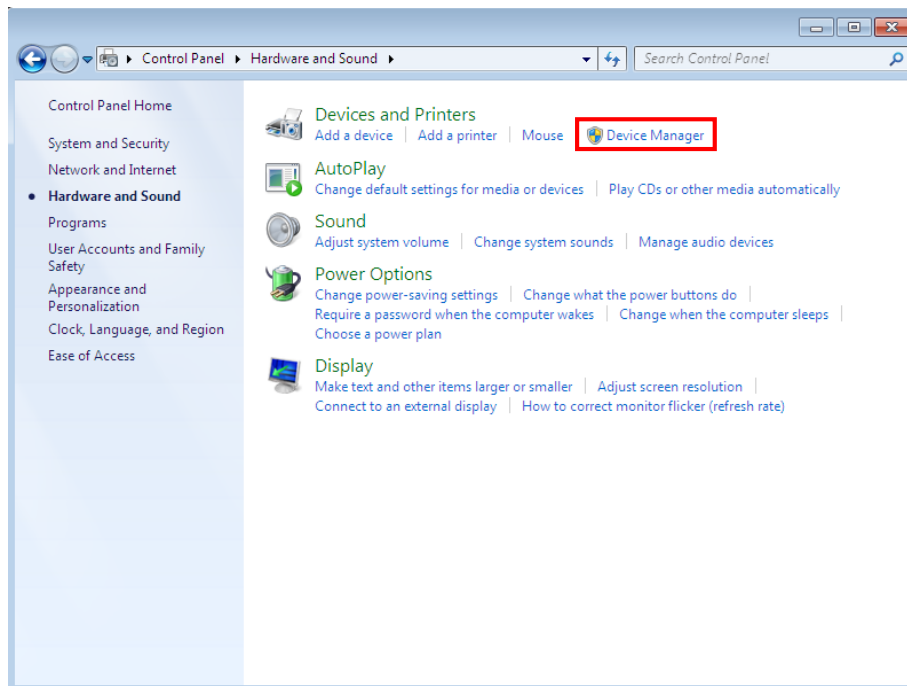
- For Windows 8.1...Click [Start] - [PC Settings] - [Control Panel] and finally [Hardware and Sound].



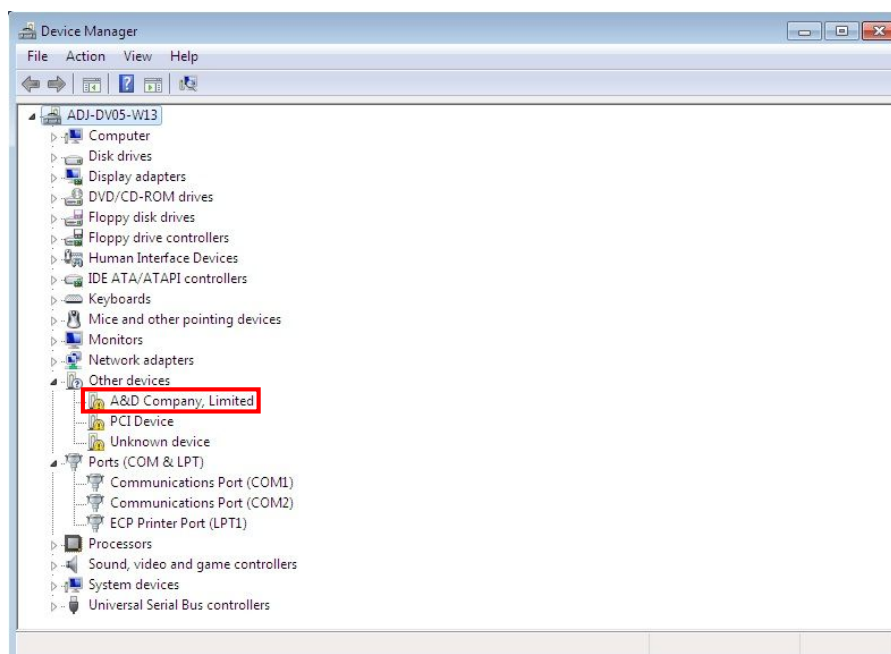
- For Windows 7, Vista...Open the control panel with [Start] - [Control Panel]. To display the control panel, select [Category] in display format in Windows 7. In Windows Vista, select [Control Panel Home]. Click [Hardware and Sound] in the control panel.



- (8) Click [Device Manager] in [Hardware and Sound]. (The screen is an example from Windows 7)

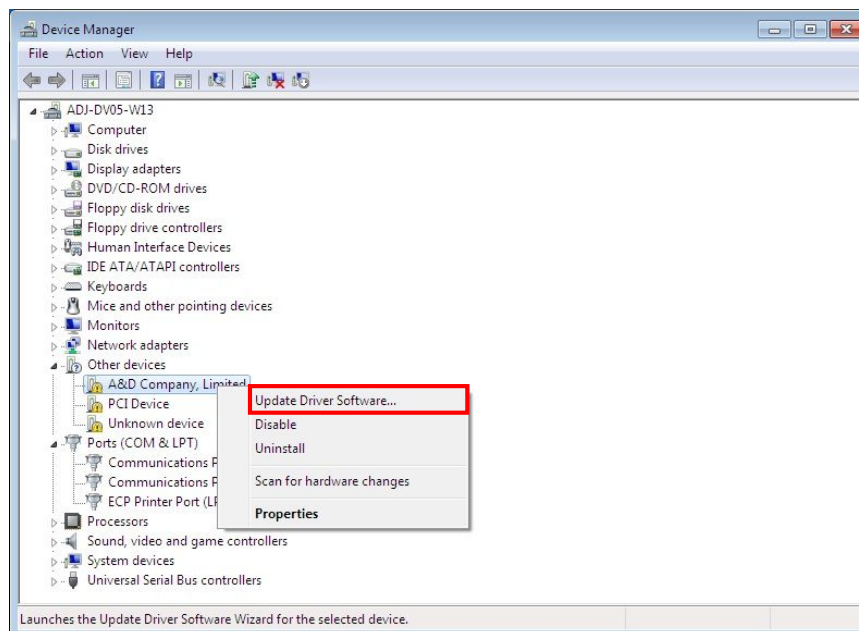


- (9) Check the device indicated as "A&D Company, Limited" in [Device Manager].

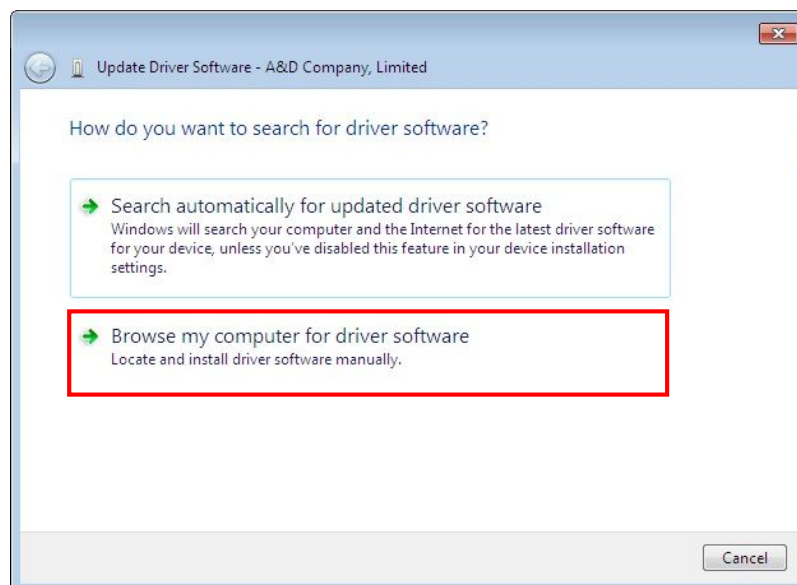




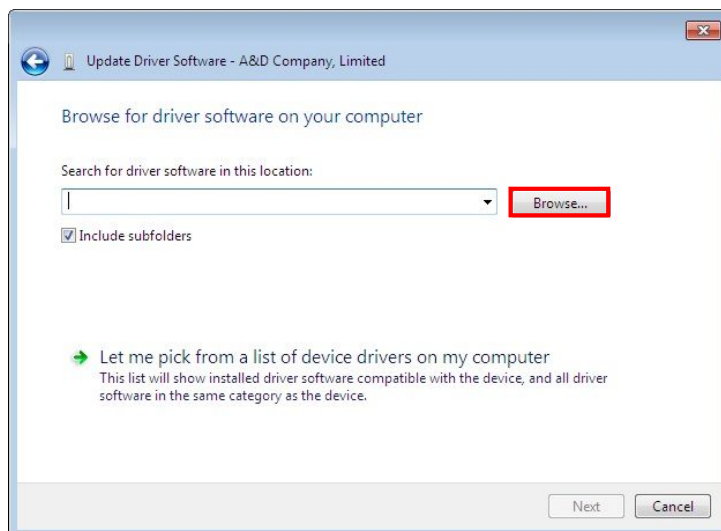
- (10) Right-click on the checked device and select [Update Driver Software] on the displayed menu.



- (11) When the [Update Driver Software] dialog box appears, click [Browse my computer for driver software].



(12) The following screen appears and click [Browse].

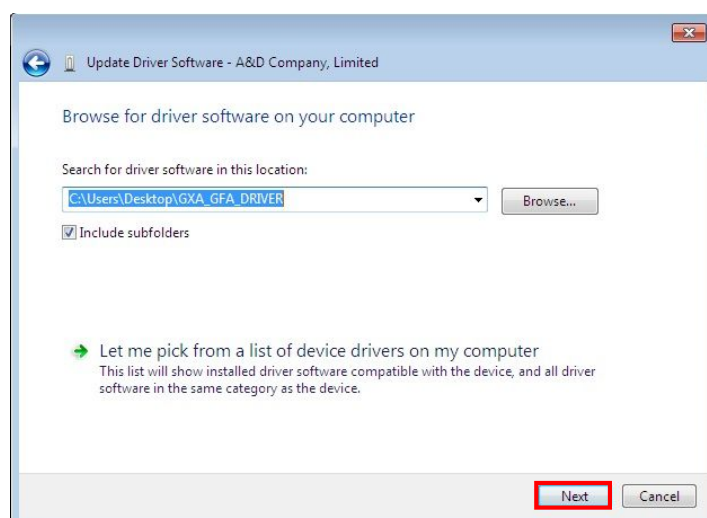


(13) Select "GXA\_GFA\_DRIVER" and click [OK].

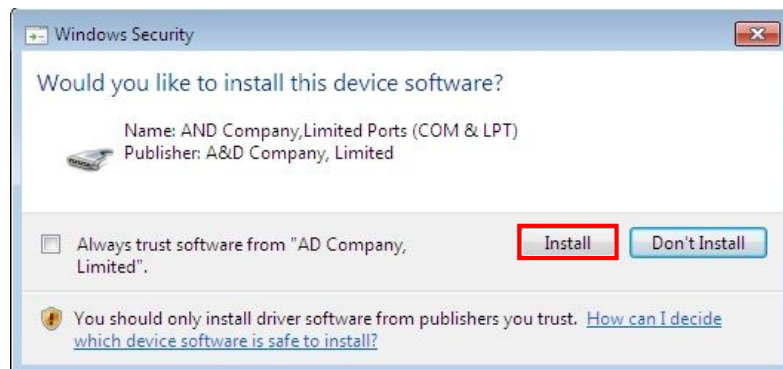


(14) When you return to the screen to specify the location of the file, click [Next].

※ The user name will differ depending on your PC.

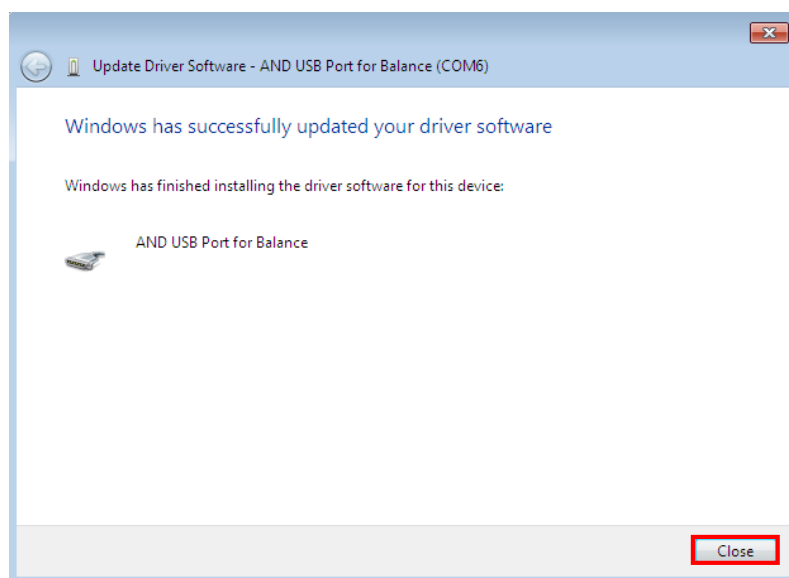


- (15) Installation starts. When the following security warning appears during installation, click [Install].



- (16) Click [Close] when installation is completed.

The COM port name will be "AND USB Port for Balance".



### 3-3. For Windows XP

- (1) Extract the downloaded "GXA\_GFA\_DRIVER" zip file.
- (2) Plug the supplied USB cable into the USB interface on the back of the GX-A / GF-A, and connect it to the computer.
- (3) The start screen of the search for new hardware wizard is displayed.  
Select [Install from list or specific location (Advanced)], and click [Next].
- (4) Select [Include this location in the search] and click [Browse].
- (5) Select "GXA\_GFA\_DRIVER" and click [OK].
- (6) When you return to the screen to specify the location of the file, click [Next].
- (7) Driver search will start.
- (8) A warning will be displayed, but this will not affect operation. Click [Continue].
- (9) The driver is installed. When you are finished, click [Finish].  
The COM port name will be "AND USB Port for Balance".