

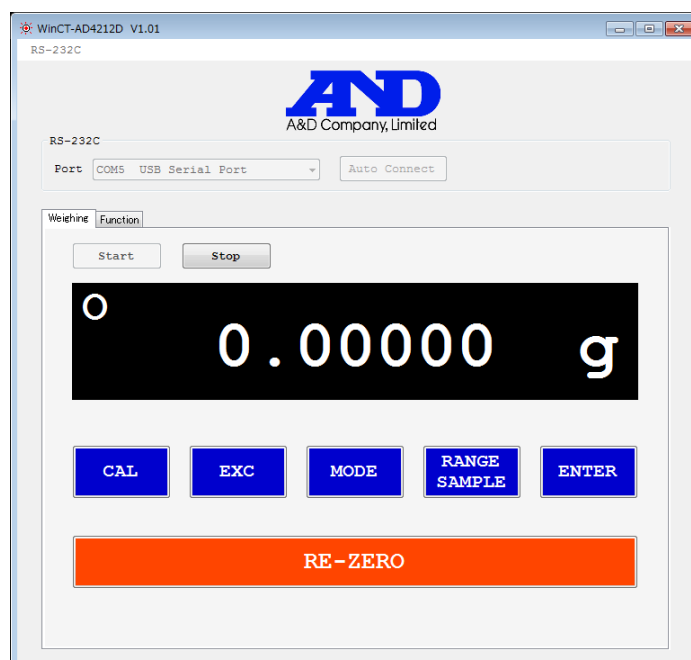
Operation Manual

Table of Contents

1. Features
2. Connection Setup
3. Start Up
4. Operation
5. User Interface

1. Features

WinCT-AD4212D can display weighing values and be used to control the operation and change the internal settings of the A&D AD-4212D Series using a PC.



- Weighing values from the balance are displayed in real time.
- Re-zero, calibration and other key operations of the balance can be performed.
- Internal settings of the balance can be read and changed all at once.

2. Connection Setup

2-1. Connect balance with a PC

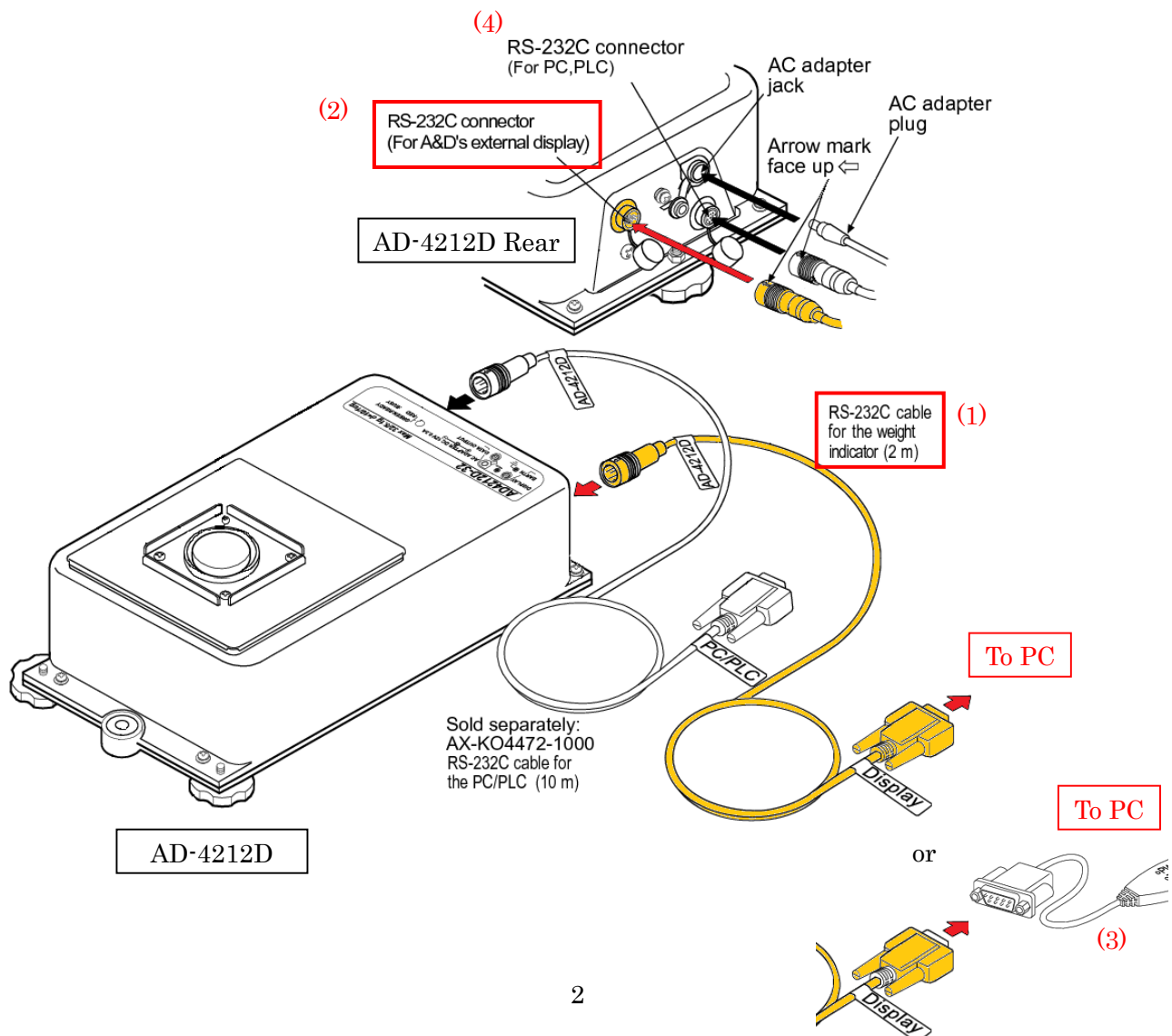
1) For a PC with an RS-232C interface

Use the RS-232C cable (1) that came with the AD-4212D series to connect the RS-232C output connector for A&D's external display (2) on the back panel of the AD-4212D with the RS-232C interface on the PC.

2) For a PC **without** an RS-232C interface

Use the RS-232C cable (1) that came with the AD-4212D series and the separately-sold AX-USB-9P serial/USB converter with cable (3) (driver required) to connect the RS-232C output connector for A&D's external display (2) on the AD-4212D with the USB interface on the PC.

Note) If you connect the RS-232C output connector for PC/PLC (4) to the PC, this software will not operate properly.

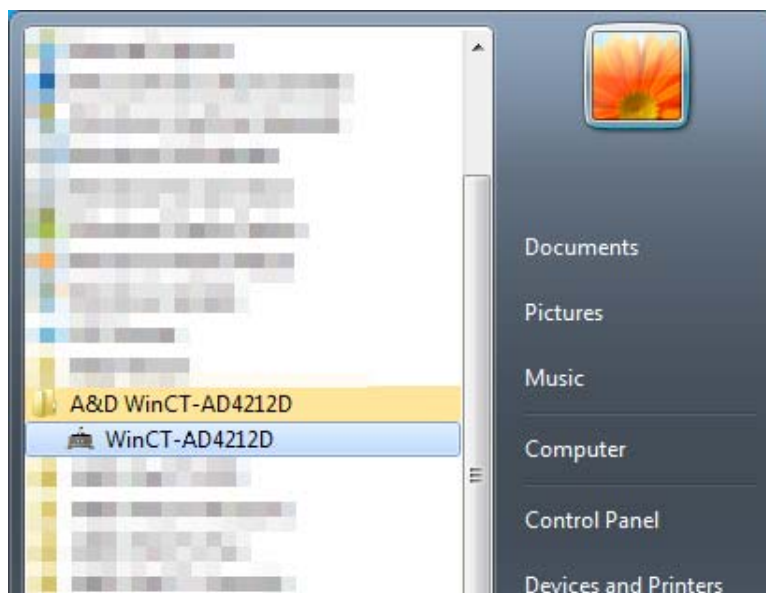


3. Start Up

3-1 WinCT-AD4212D Start Up

Start WinCT through the start menu.

Navigate through Start → All Programs → A&D WinCT-AD4212D → WinCT-AD4212D



* When connecting a balance other than the AD-4212D series or a non-A&D balance, this software may not operate correctly.

4. Operation

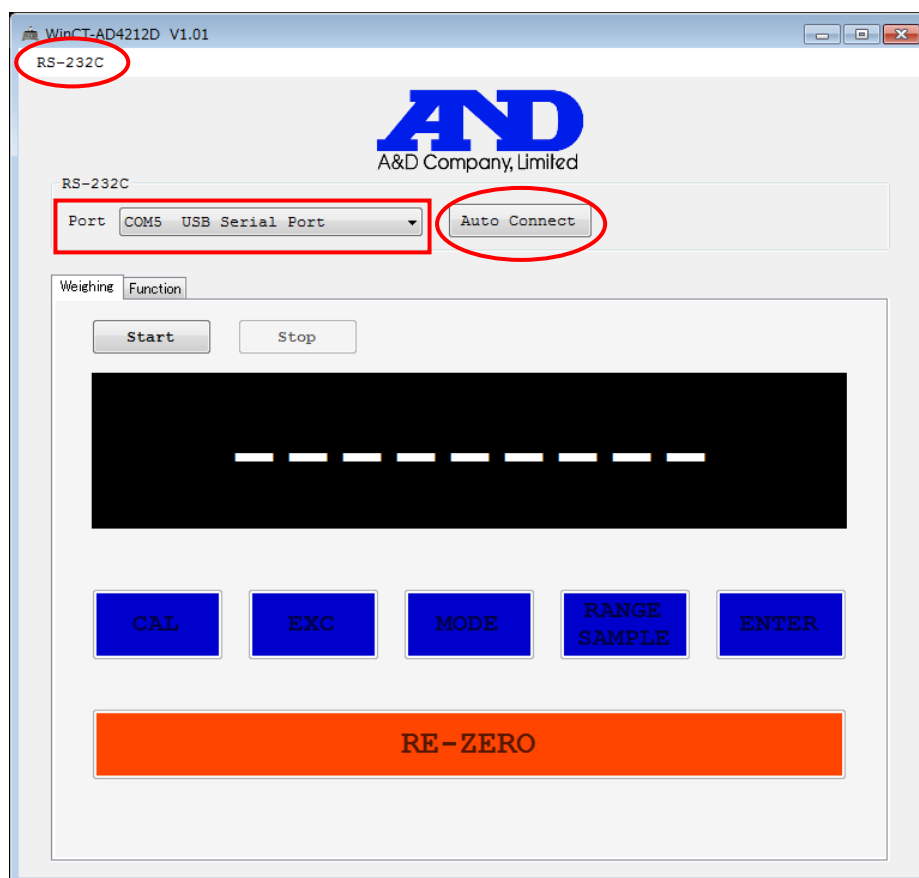
4-1. Communication Settings

Select **Port** and select the COM port the balance is connected to.

Click the **Auto Connect** button to automatically perform RS-232C connection setup.

When you are done, a dialog will appear. Click **OK**.

You can also set up communication manually by clicking the **RS-232C** menu at the top of the window.
(The initial values of the communication settings of the WinCT-AD4212D are the same as the factory settings of the AD-4212D series.)

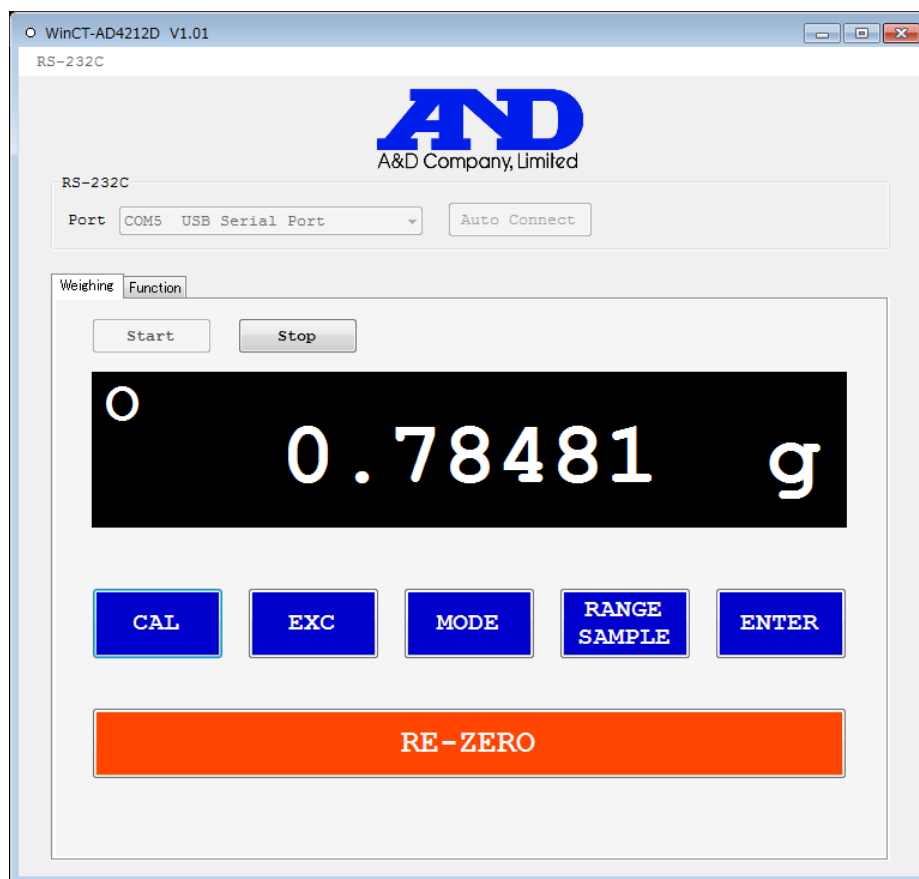


4-2. Start weighing

Confirm that the **Weighing** tab is selected and click the **Start** button.

Communication with the balance will begin and the weight will display. The operation buttons to control the balance will be activated.

If the RS-232C settings are incorrect the weighing value will not display. Click the **Stop** button, then click the **Auto Connect** button to perform automatic setup or click the **RS-232C** menu to perform manual setup.



4-3. Finish weighing

Click the **Stop** button to end communication with the balance. Selecting the **Function** tab will also end communication with the balance.

4-4. Retrieve balance internal settings

Select the **Function** tab, and click the **Start** button.

Transfer of internal setting data from the balance will begin. This will take about 30 seconds.

When data transfer is complete, Model (model name), S/N (serial number), and ID will appear, and the internal settings of the balance will display in the Function Table. Settings are divided into tabs according to their classes.

4-5. Change internal settings

You can select the settings displayed in the Function Table and change as desired.

ID can be changed by direct input.

Click **Undo** to revert settings to the state when the data was received.

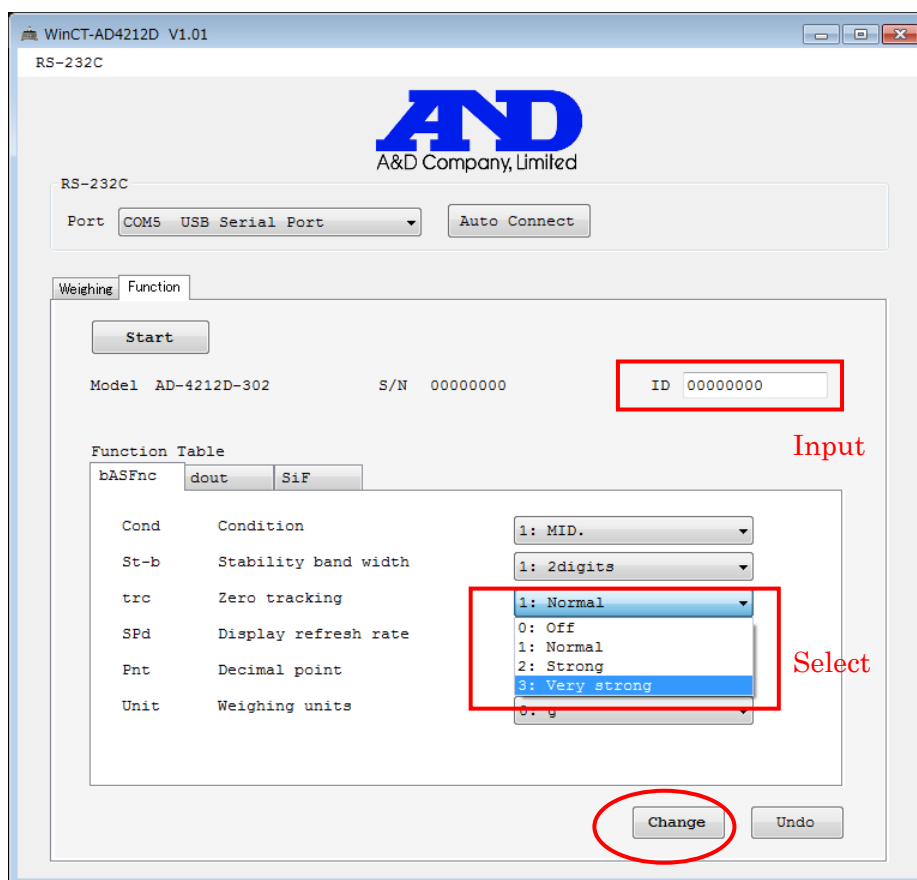
When you finish configuring settings, click the **Change** button.

A confirmation dialog will appear. Click **OK**.

Setting data will begin to transfer to the balance. The pilot lamp of the balance will turn orange.

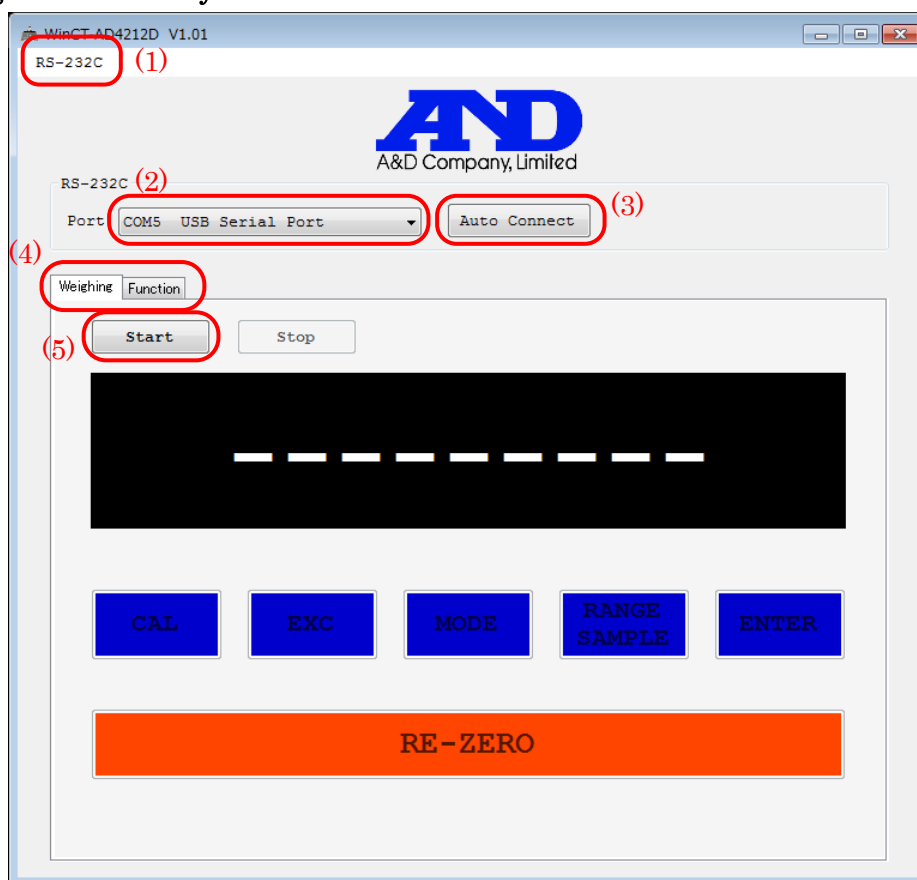
Do not turn off the power of the balance.

If the data transfer is successful a completion dialog will appear. Click **OK**.



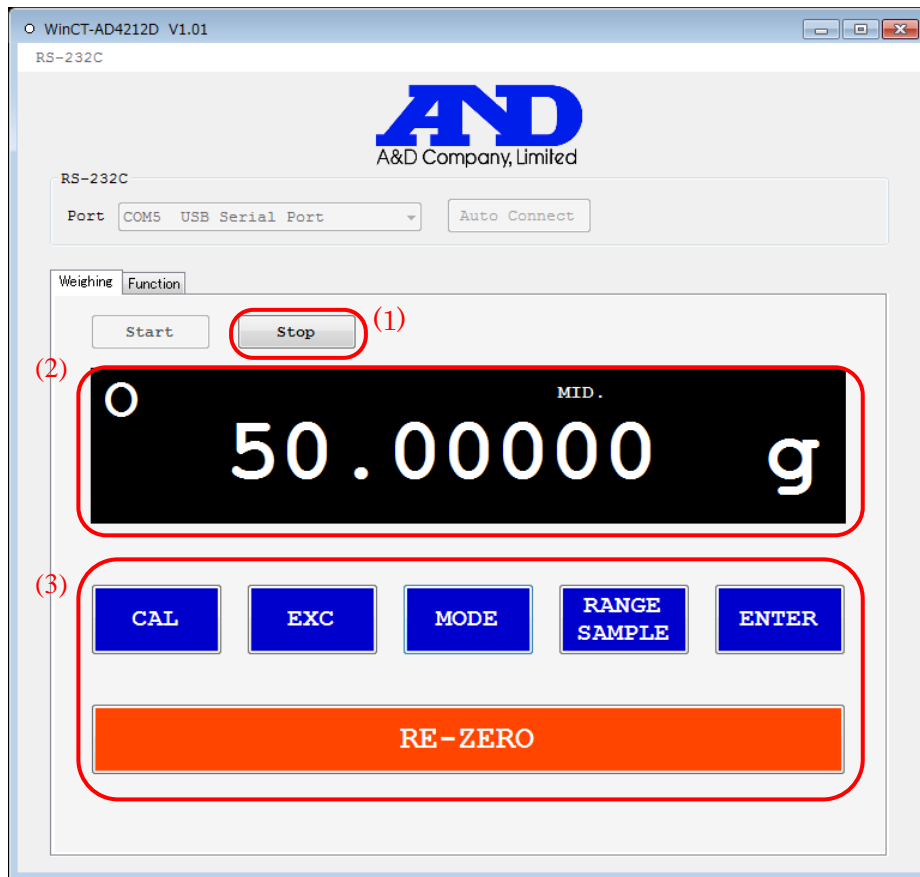
5. User Interface

5-1. Weighing mode - Standby



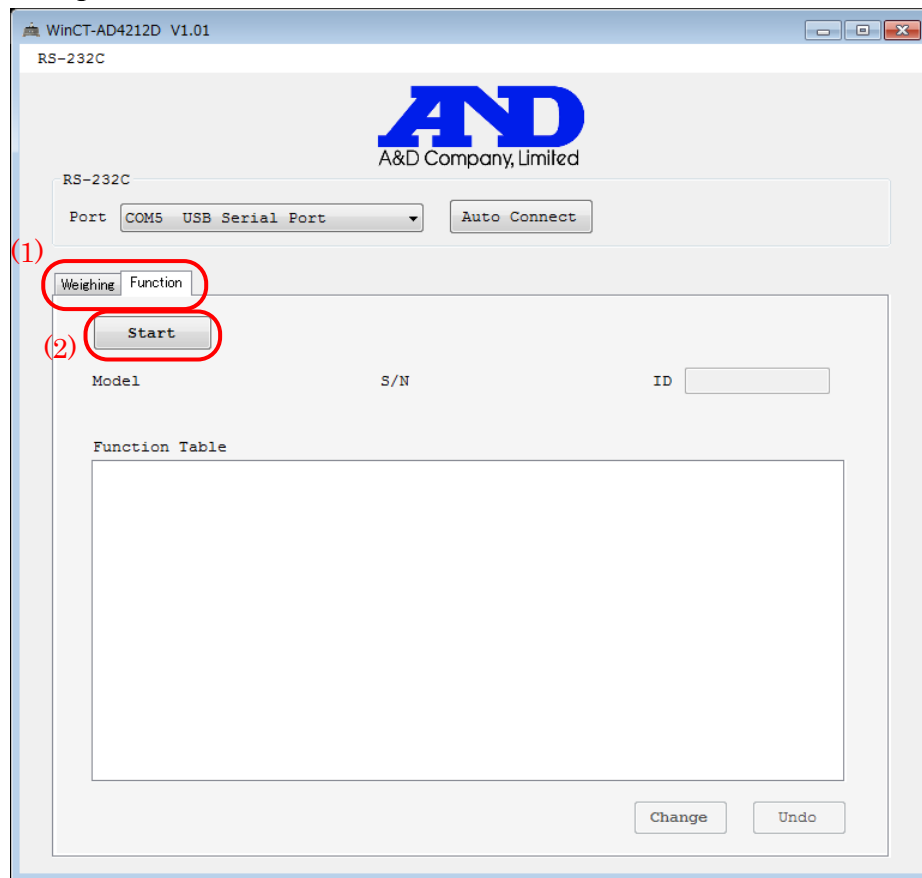
- | | |
|-----------------------------------|-----------------------------------------------------------------------------------------------|
| (1) RS-232C menu | Manually set the baud rate, parity and data length. |
| (2) Port selection | Select the PC COM port.
The available PC COM ports will be shown. |
| (3) Auto Connect button | Automatically sets the baud rate, parity and data length. |
| (4) Weighing/Function tabs | Use the tabs to switch between weighing mode (Weighing) and internal setting mode (Function). |
| (5) Start button | Click to start weighing mode.
Click when the AD-4212D pilot lamp is green (weighing). |

5-2. Weighing mode - Weighing



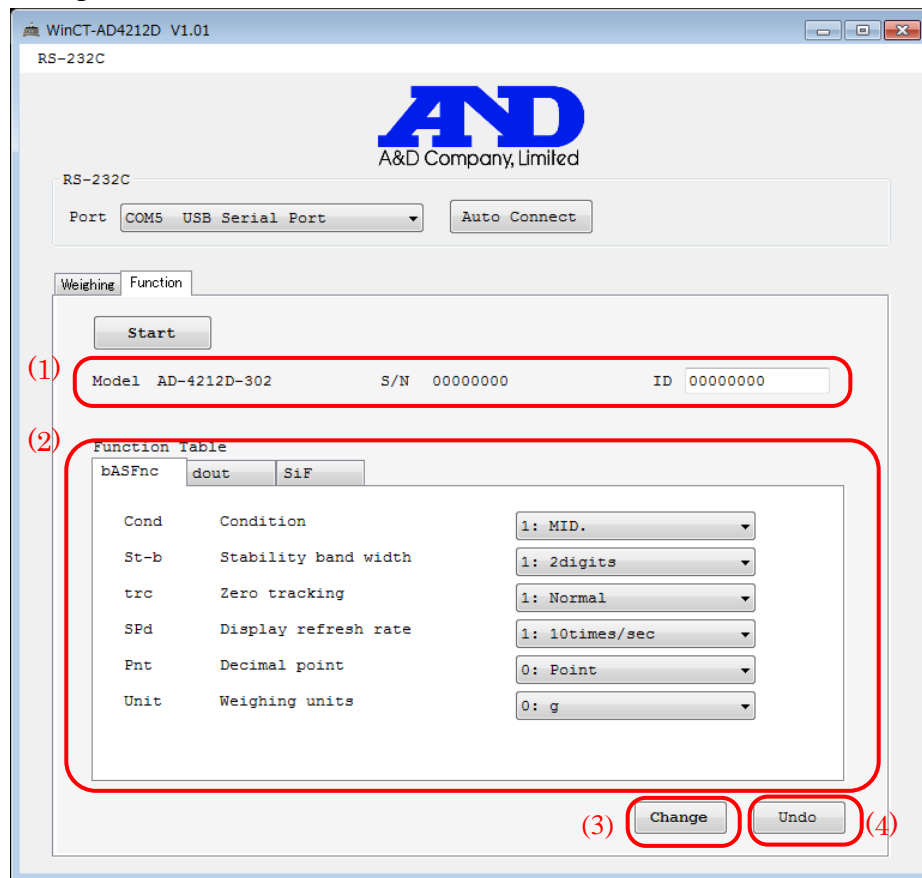
- (1) **Stop** button Communication with the balance ends and the display enters standby mode.
- (2) Weighing display
- | | |
|---------------|--------------------------------------------------------------------------------------------------------------------------------------------------------|
| Weight | The weight on the balance is displayed. |
| Stable mark | The circle mark is displayed when the weighing value becomes stable. |
| Response mark | The response characteristics are indicated as FAST, MID., or SLOW, which will appear for a short time as changes are made with the Mode button. |
- (3) Balance operation buttons (Cannot operate while in standby)
- | | |
|---------------------|-----------------------------------------------------------------------------------------------------------------------------------------------------------------------------------------------------------------------------------------------------------------------------|
| CAL | Performs calibration using the internal weight.
The CAL display will appear. When the calibration finished, the weighing display will appear again.
For more information, refer to "Calibration using the internal weight" in the AD-4212D series instruction manual. |
| EXC | Performs calibration using an external calibration weight.
For more information, refer to "Calibration using an external weight" in the AD-4212D series instruction manual. |
| MODE | Changes response characteristics. |
| RANGE/SAMPLE | Toggles the minimum display digit. |
| ENTER | Used for calibration. |
| RE-ZERO | Sets the weighing display to zero. |

5-3. Internal setting mode - Before data transfer



- (1) **Weighing/Function** tabs Use the tabs to switch between weighing mode (Weighing) and internal setting mode (Function).
- (2) **Start** button Starts communication with the balance and transfers internal settings data from the balance. This takes about 30 seconds. When data transfer is complete, Model (model name), S/N (serial number), ID will appear, and the internal settings of the balance will display in the Function Table.

5-4. Internal setting mode - After data transfer



- (1) Balance information display

Model	The model name of the balance.
S/N	The serial number of the balance.
ID	The ID of the balance.
	Input ID directly to change as required.

- (2) Internal setting display For more information on internal setting items, refer to the "Function table" in the AD-4212D series instruction manual.

Tab	Class of internal setting items.
-----	----------------------------------

Inside tab value.	Contents displayed in order of setting item, description, setting value.
-------------------	--------------------------------------------------------------------------

Select the setting value to change.

- | | |
|--------------------------|---------------------------------------------------------|
| (3) Change button | Sends the changed setting values and ID to the balance. |
|--------------------------|---------------------------------------------------------|

- (4) **Undo** button Click to revert settings to the state when the data were received.

Microsoft, Windows are registered trademarks or trademarks of Microsoft Corporation in the United States and other countries.

July 2, 2018
A&D Company, Limited