

**Stainless  
Steel**

## Beam Load Cells

# LCM13 Series

- ★ **Stainless Steel Body Is Ideal for Protection against Water, Moisture, and Corrosion (IP67)**
- ★ **Low Profile and Lightweight for Easy Mounting**
- ★ **Compact Size**
- ★ **For Both Tension and Compression Usage**
- ★ **Can Be Used for Multi-Point Weighing**



### Models & Capacities

| Model     | Capacity    |
|-----------|-------------|
| LCM13K100 | 1kN(100kgf) |
| LCM13K200 | 2kN(200kgf) |
| LCM13K300 | 3kN(300kgf) |
| LCM13K500 | 5kN(500kgf) |
| LCM13T001 | 10kN(1tf)   |
| LCM13T002 | 20kN(2tf)   |
| LCM13T003 | 30kN(3tf)   |
| LCM13T005 | 50kN(5tf)   |

### Specifications

|                                |                                                                                          |
|--------------------------------|------------------------------------------------------------------------------------------|
| Rated Output                   | 2mV/V $\pm$ 0.1%                                                                         |
| Maximum Safe Overload          | 150% of R.C.                                                                             |
| Combined Error                 | 0.03% of R.O.                                                                            |
| Recommended Excitation Voltage | DC5 to 12V                                                                               |
| Maximum Excitation Voltage     | DC15V                                                                                    |
| Zero Balance                   | $\pm$ 1% of R.O.                                                                         |
| Input Terminal Resistance      | Approximately 380 $\Omega$ $\pm$ 20 $\Omega$                                             |
| Output Terminal Resistance     | 350 $\Omega$ $\pm$ 3.5 $\Omega$                                                          |
| Insulation Resistance          | Greater than 5,000M $\Omega$ at DC50V                                                    |
| Operating Temperature          | -15 $^{\circ}$ C to 60 $^{\circ}$ C                                                      |
| Compensated Temperature Range  | -10 $^{\circ}$ C to 40 $^{\circ}$ C                                                      |
| Temperature Effect             | Zero : 0.016% of R.O./10 $^{\circ}$ C Typ.<br>Span : 0.013% of Load/10 $^{\circ}$ C Typ. |
| Cable Length                   | 3m/118 inches                                                                            |
| Dustproof/Waterproof           | IP67                                                                                     |

### Accessory

**Swivel Foot LCZAFT01S**

**Stainless steel body**  
Only for LCM13K500 (500kgf)  
and LCM13T001 (1tf)



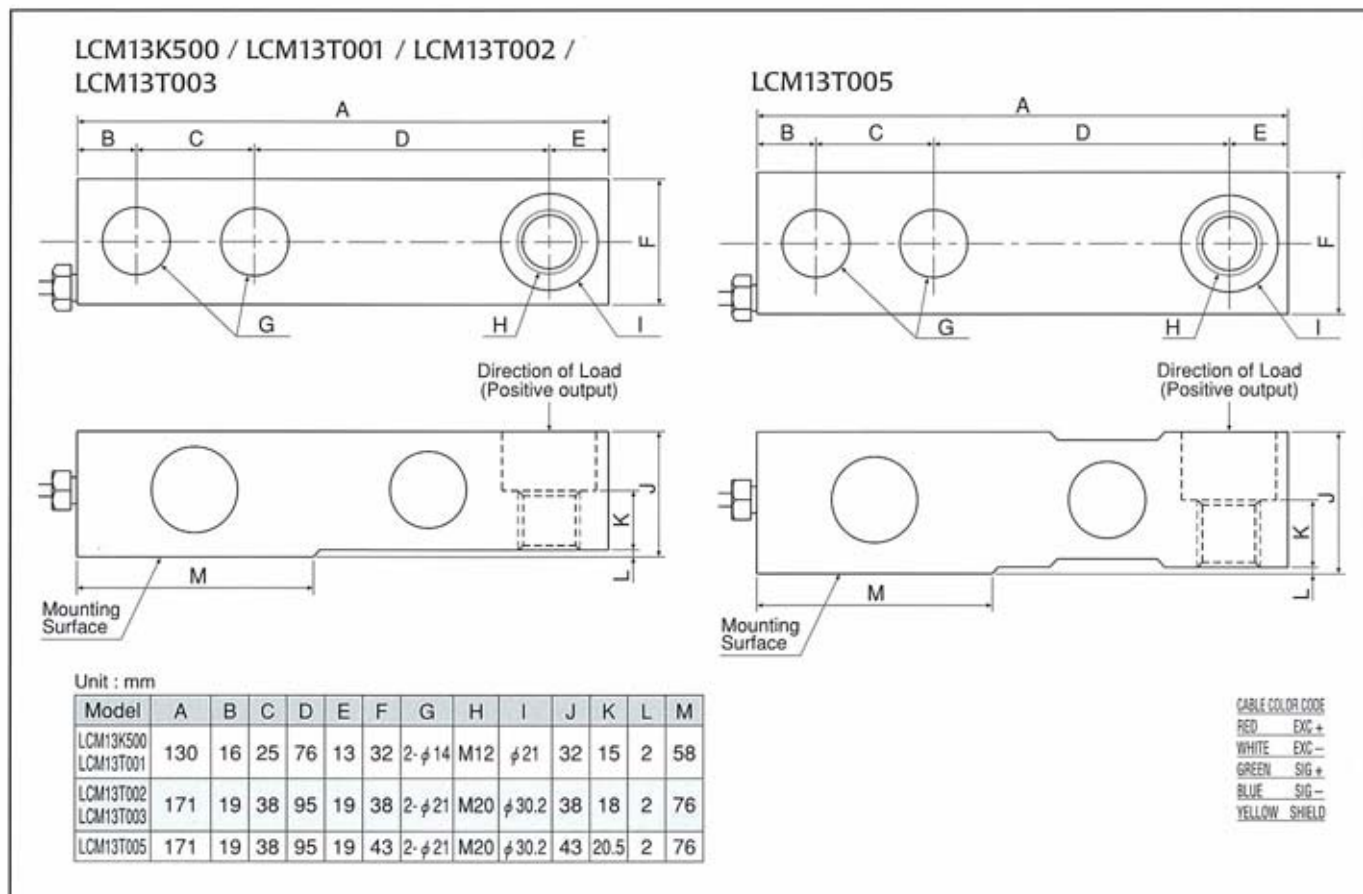
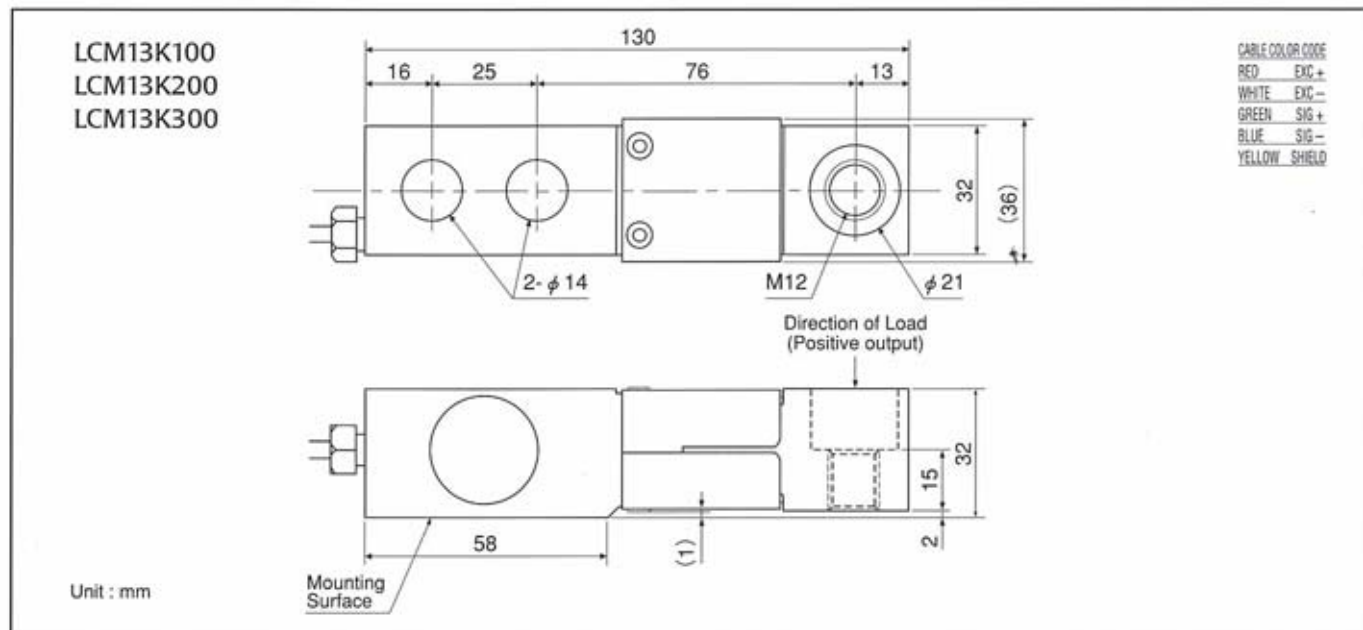
# AND

A&D Company, Limited  
<http://www.aandd.jp>

...Clearly a Better Value

# LCM13 Series

## Dimensions



Specifications are subject to change for improvement without notice.

# A&D

... Clearly a Better Value

**A&D Company, Limited**

3-23-14 Higashi-Ikebukuro, Toshima-ku, Tokyo 170-0013 JAPAN  
Telephone: [81] (3) 5391-6132 Fax: [81] (3) 5391-6148  
<http://www.aandd.jp>

**A&D ENGINEERING, INC.**

1555 McCandless Drive, Milpitas, CA. 95035 U.S.A.  
Telephone: [1] (408) 263-5333 Fax: [1] (408) 263-0119

**A&D MERCURY PTY. LTD.**

32 Dew Street, Thebarton, South Australia 5031 AUSTRALIA  
Telephone: [61] (8) 8301-8100 Fax: [61] (8) 8352-7409

**A&D INSTRUMENTS LTD.**

Unit 24/26 Blacklands Way Abingdon Business Park,  
Abingdon, Oxon OX14 1DY United Kingdom  
Telephone: [44] (1235) 550420 Fax: [44] (1235) 550485

**<German Sales Office>**

Große Straße 13 b 22926 Ahrensburg, GERMANY  
Telephone: [49] (0) 4102 459230 Fax: [49] (0) 4102 459231

**A&D KOREA Limited**

Manhattan Bldg. 8F, 36-2 Yoido-dong, Youngdeungpo-gu, Seoul, KOREA  
Telephone: [82] (2) 780-4101 Fax: [82] (2) 782-4280

**A&D RUS CO., LTD.**

Korp.134A, D.29, UL. Vereiskaya, Moscow, 121357  
RUSSIAN FEDERATION  
Telephone: [7] (495) 727-4455 Fax: [7] (495) 727-4456