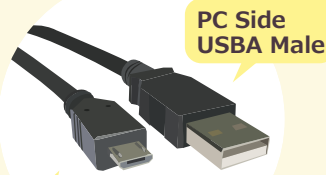


1 Connecting AD4430R to PC by USB cable

Device Installation



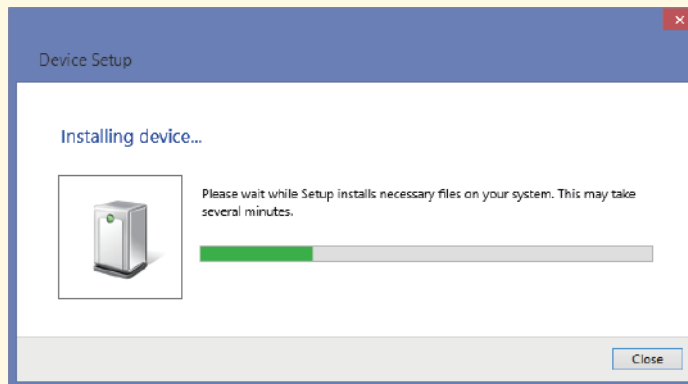
USB Cable



PC Side USB A Male

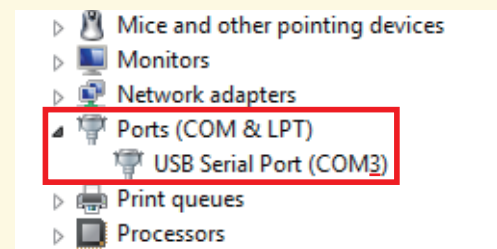
AD4430R Side USB Micro B Male

- 1 Turn on power of the AD4430R and connect the USB cable
- 2 A software installation message will appear shortly as shown below



What to do if the COM Port is not known

- 1 Open the control panel window and click device manager
- 2 Expand the COM LPT Port option to reveal USB Serial Port (COM). The number after COM is the port number



What to do if drivers were not installed automatically

- 1 Access the following link <http://www.ftdichip.com/FTDrivers.htm>
- 2 Press [click here](#)

▶ Drivers

PLEASE NOTE - When updating drivers, refer to the following document: [AN_107 - Advanced Driver Options](#)

New drivers are now available to support the [FT4222H](#) - for D2XX drivers please [click here](#)

- 3 Select setup executable and download

Operating System	Release Date	x86 (32-bit)	x64 (64-bit)	ARM	MIPS	SH4	Comments
Windows*	2017-08-30	2.12.28	2.12.28	-	-	-	WHQL Certified. Includes VCP and D2XX. Available as a setup executable Please read the Release Notes and Installation Guides.

- 4 After downloading [CDM21228_Setup.zip](#) click the file and install

Note: When CDM21228_Setup.zip is updated the version number, 2.12.28, will change

2 WinCT-UFC (Can read and alter multiple settings at once)

Downloading WinCT-UFC

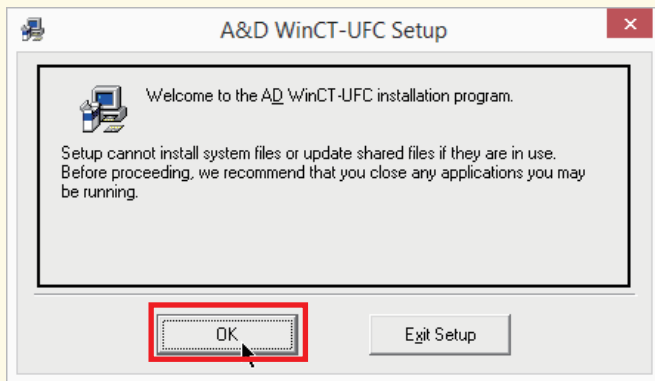
- 1 Select WinCT-UFC 1.8MB ZIP file on our homepage (<http://www.aandd.jp/products/software/winctufc.html>)

Download

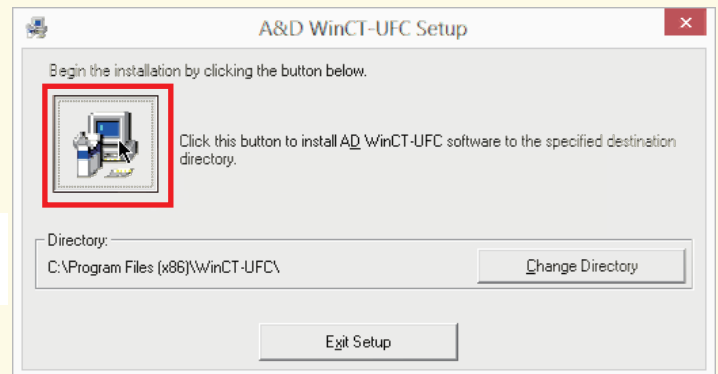
[WinCT-UFC 1.8MB ZIP file](#)

- 2 Unzip WinCT-UFC_E100.zip and run SETUP.EXE.

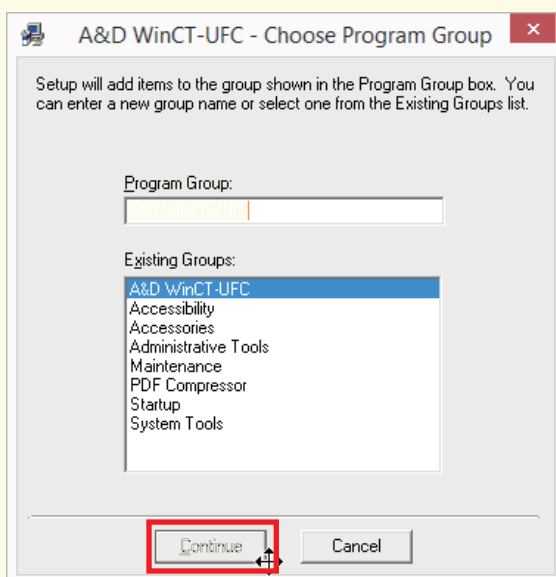
- 3 Press Ok



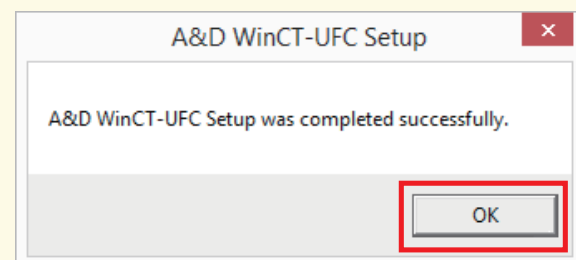
- 4 Click the computer icon to begin installation.



- 5 Select "A&D WinCT-UFC"

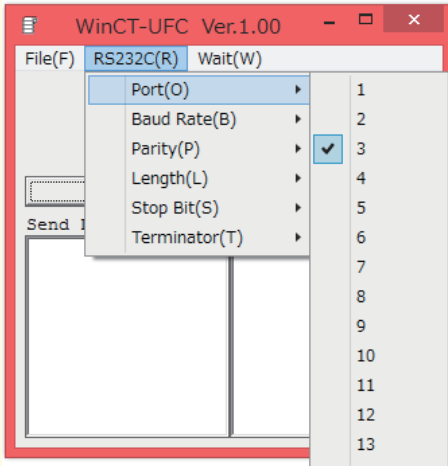


- 6 Installation is complete

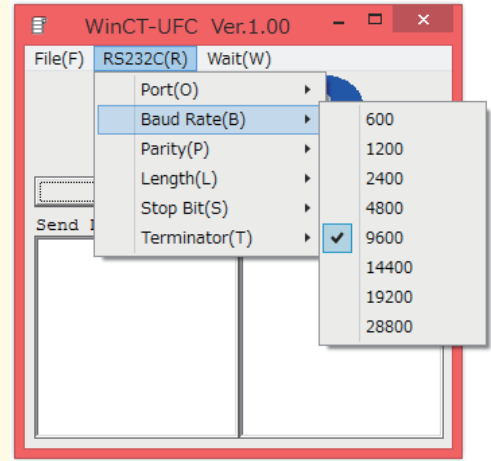


2 WinCT-UFC (Can read and alter multiple settings at once)

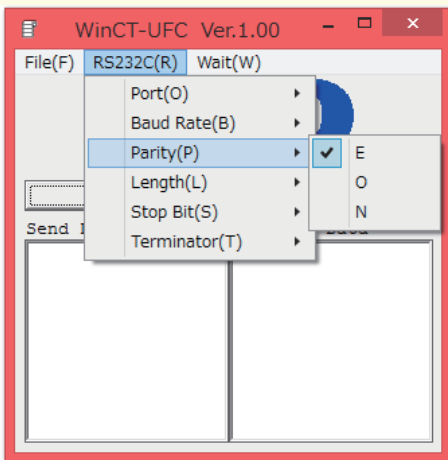
WinCT-UFC Connection Settings



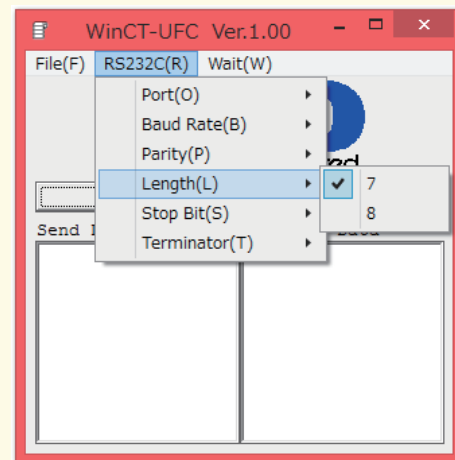
Port: Select the number corresponding to port number noted earlier.



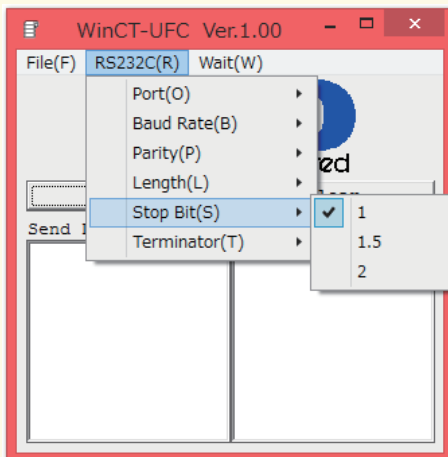
Baud Rate : 9600



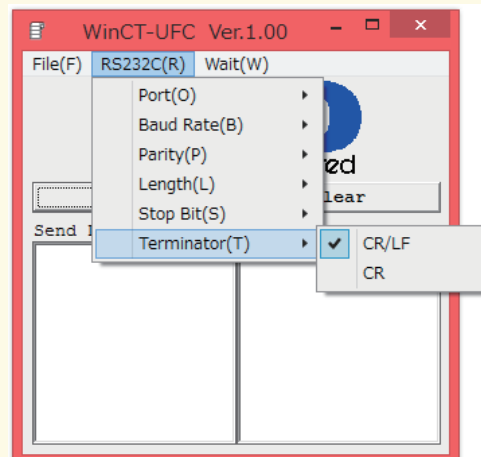
Parity : E



Length : 7bit



Stop Bit : 1

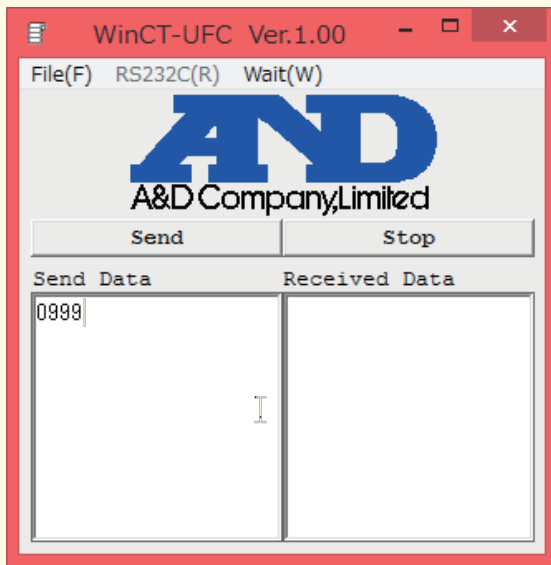


Terminator : CR/LF

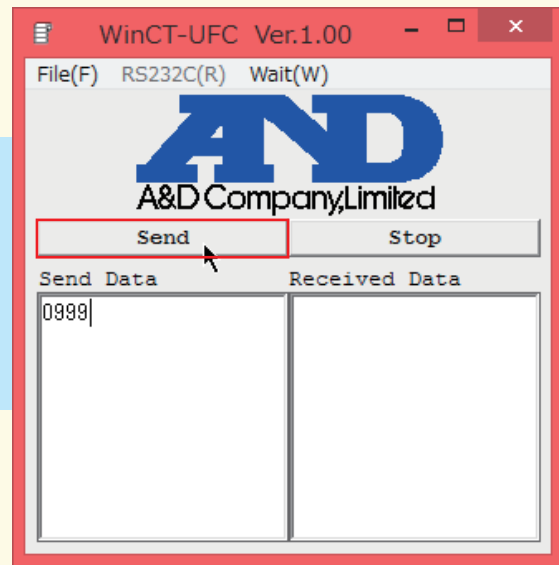
② WinCT-UFC (Can read and alter multiple settings at once)

Connection Operation Instructions

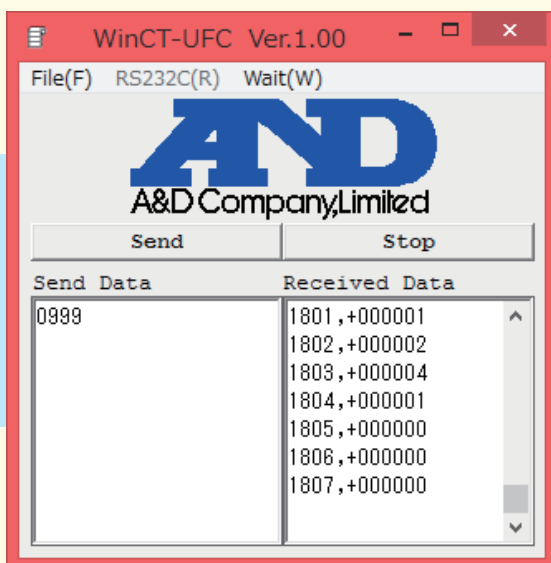
① Enter 0999 into the Send Data box to read out all functions



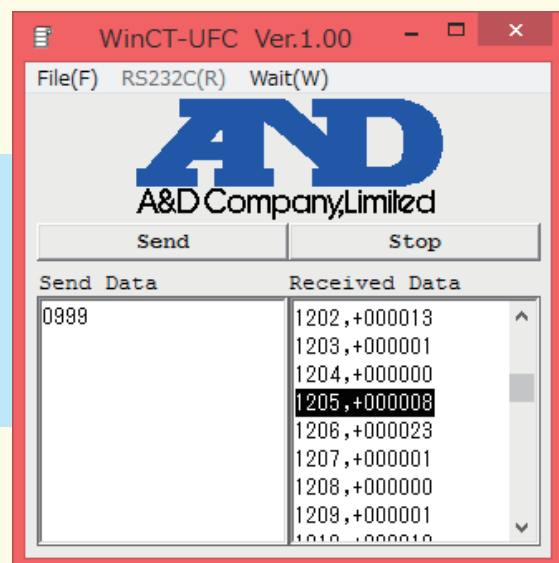
② Press Send



③ Function settings will display in the Received Data box



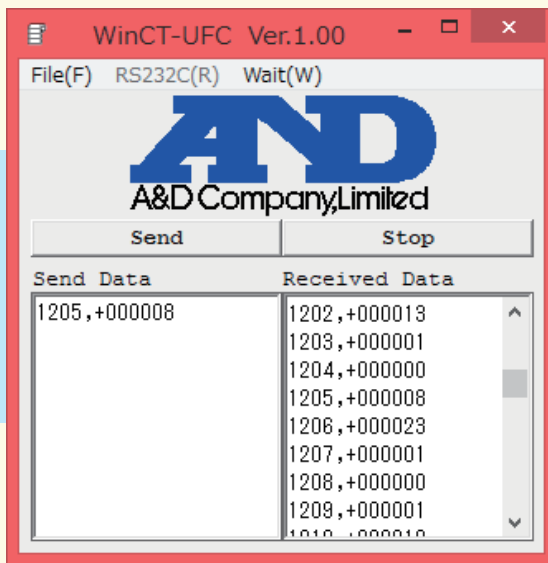
④ Copy the function row for the setting that is to be altered



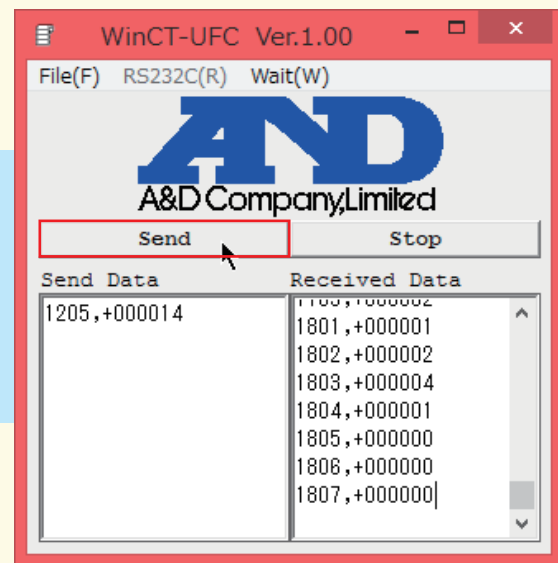
Note: Select multiple rows to change more than one function setting at a time

② WinCT-UFC (Can read and alter multiple settings at once)

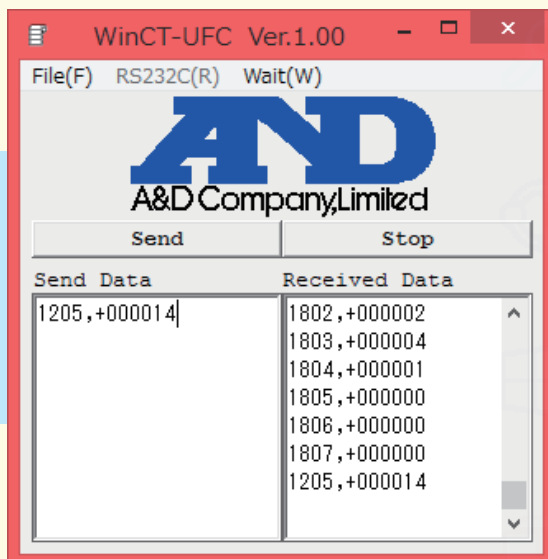
⑤ Paste the data into the Send Data box to overwrite the selected value(s)



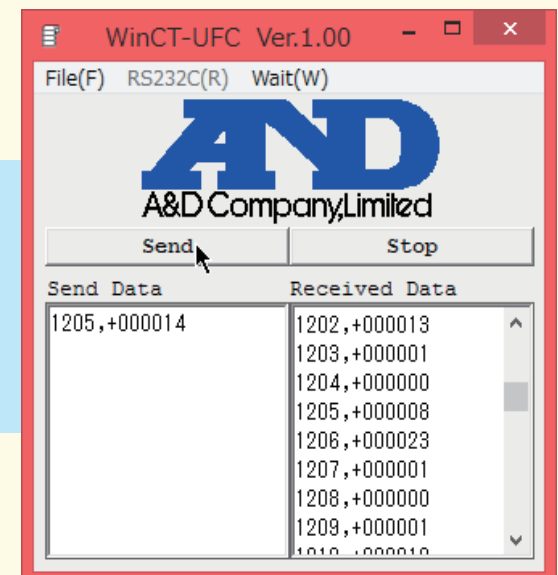
⑥ Write the new setting data and press send



⑦ If the same element is displayed in the Received Data box settings were changed



⑧ Press stop to finish



Note: Send data and Received Data can be saved to a text editor through the File menu.

③ WinCT (Can read and alter settings for a single element)

Downloading WinCT

Note: This operation explains how to use WinCT5.40

Users with Windows XP or older operating systems should use WinCT3.00

Users with Windows Vista, 7, 8.110 should use WinCT5.40

- 1 Select WinCT from our company homepage (<http://www.aandd.jp/products/software/winct.html>)

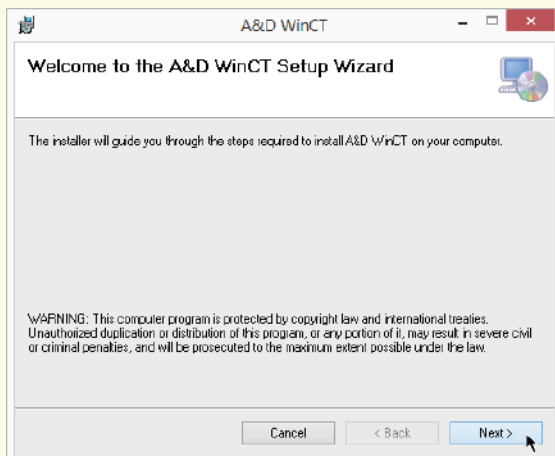
For Windows Vista or later versions, please use WinCT 5.40

Download WinCT 5.40

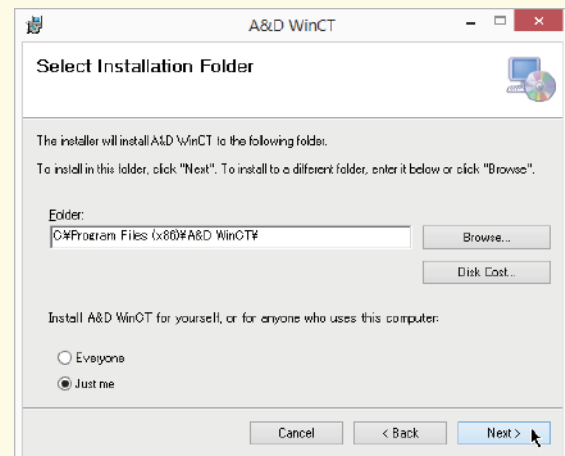
File size: 3.7MB approx.

- 2 WinCT540_Setup_E.zip and click WinCT_Setup.msi in the WinCT540_Setup folder to install

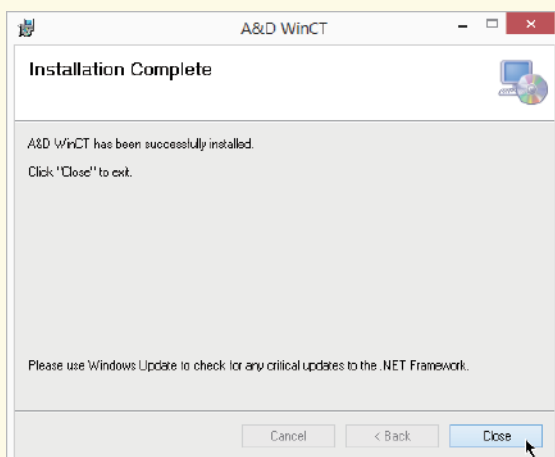
- 3 Click next



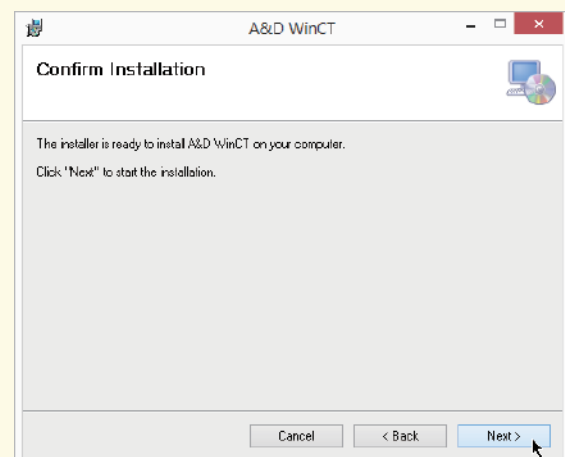
- 4 Confirm the install destination and click next



- 5 Click next to begin installation



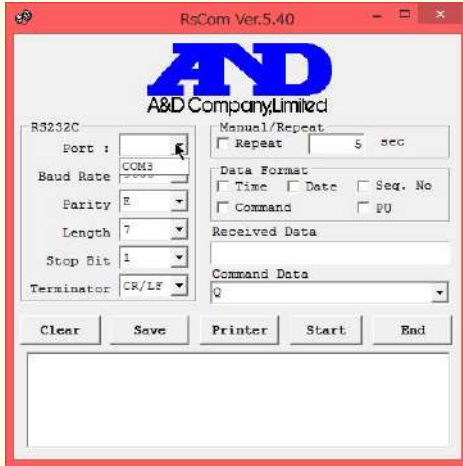
- 6 Installation is complete



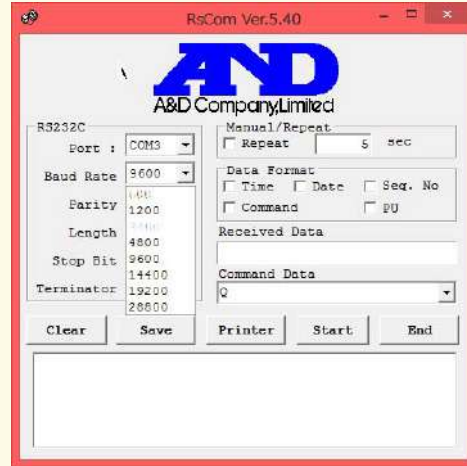
③ WinCT (Can read and alter settings for a single element)

WinCT-RsCom Connection Settings

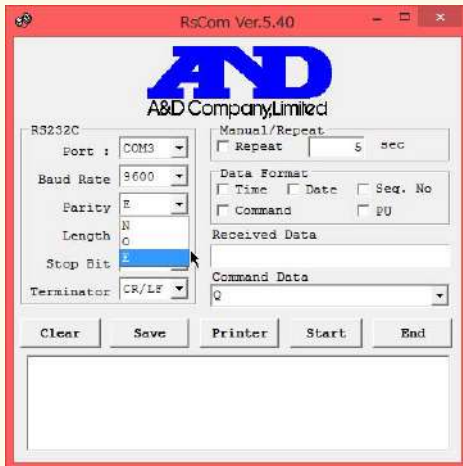
Click the RsCom executable from WinCT



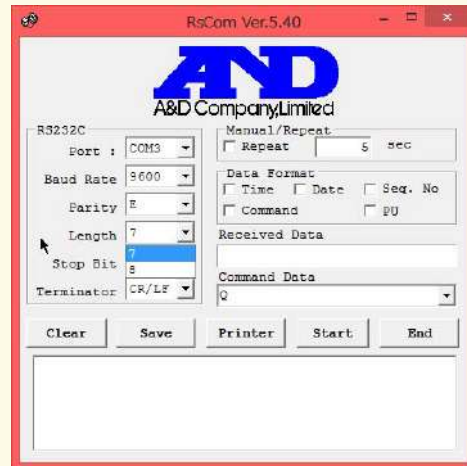
Port : Select the port noted earlier.



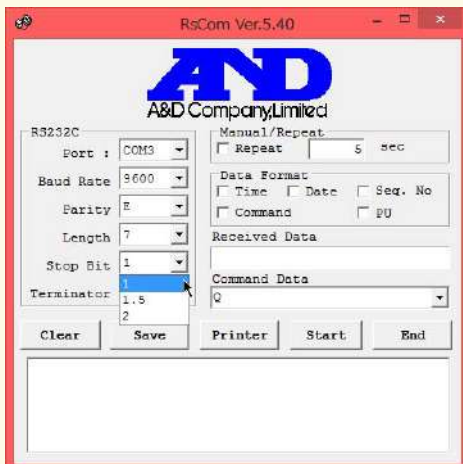
Baud Rate : 9600



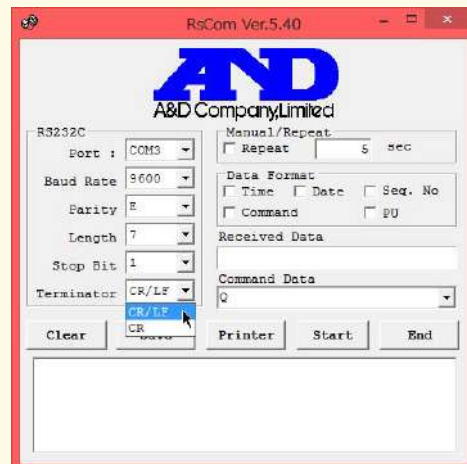
Parity : E



Length : 7bit



Stop Bit : 1

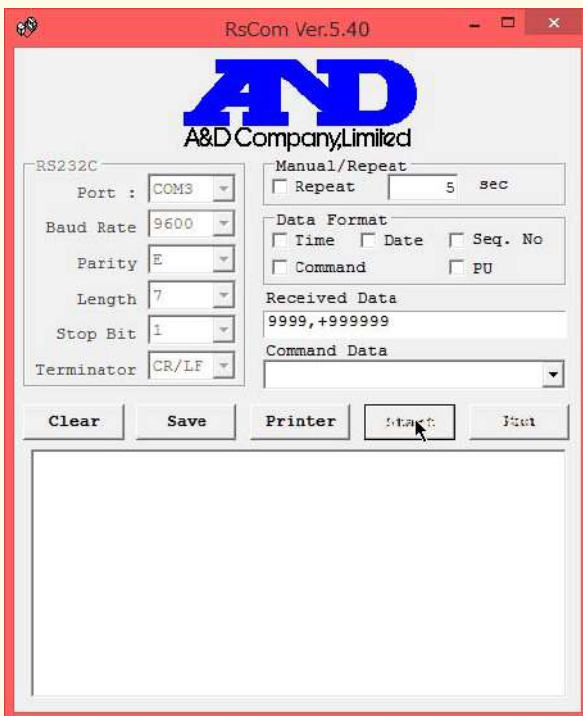


Terminator : CR/LF

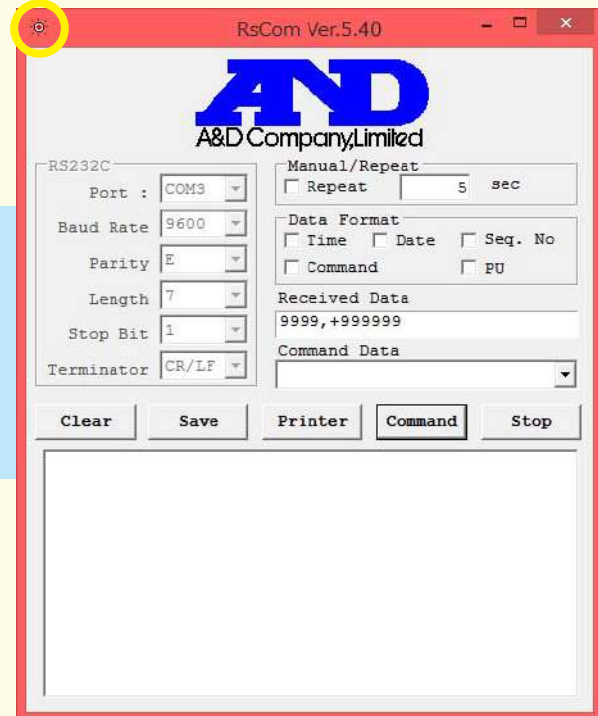
③ WinCT (Can read and alter settings for a single element)

Operation Instructions

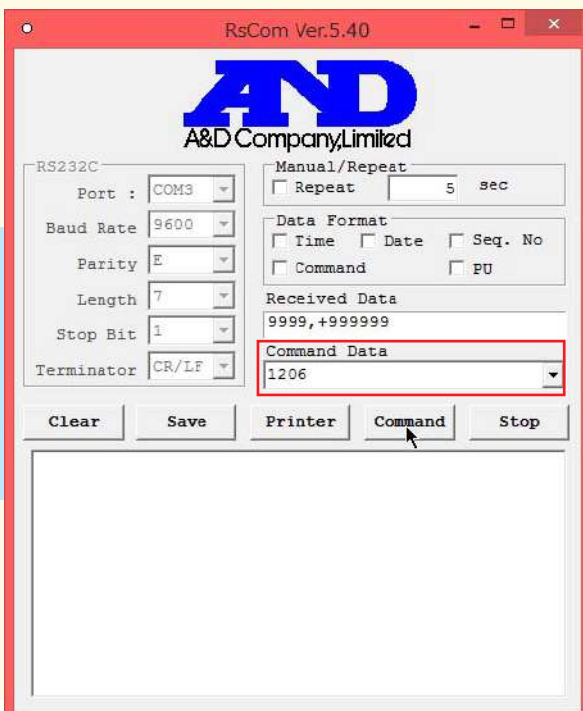
1 Press Start to begin connection



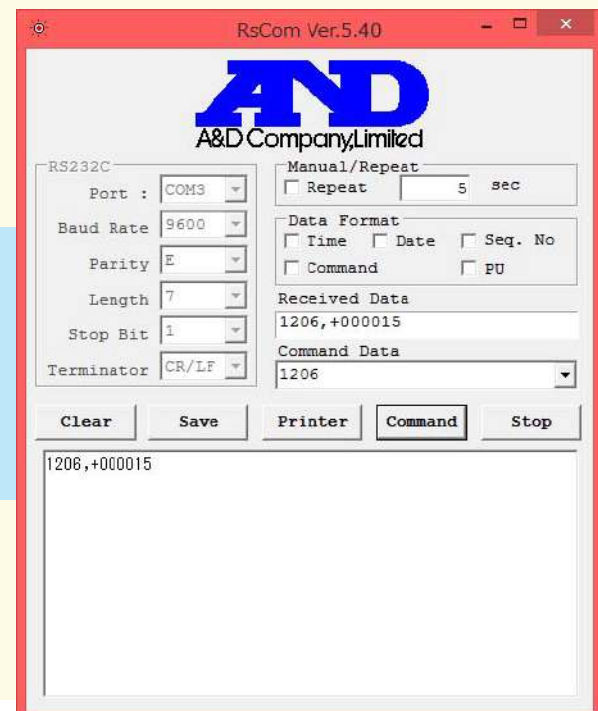
2 When the mark at the top left of the window flickers connection has been established



3 Enter the desired setting function code into the Command Data box and press Command



4 The value displayed in the box at the bottom of the window is the current function setting



③ WinCT (Can read and alter settings for a single element)

5 Paste the current function, change the last 2 digits to the desired setting and press Command.

6 If the settings data appears in the box at the bottom of the window settings were changed successfully. Press stop to finish editing settings.

