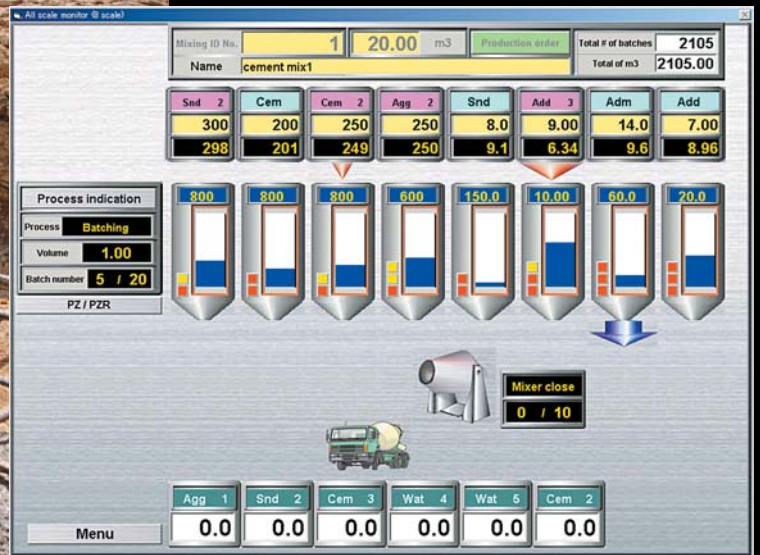


# AD-4820

## Ready Mixed Concrete Batcher Controller

The AD-4820 Ready Mixed Concrete Batcher Controller can control cement batching for up to 12 ingredients (expandable to 20 ingredients) using 4 scales expandable up to 8 scales.



# AD-4820 Ready Mixed Concrete Batcher Controller

## Operator Functions

- Plant status screen, mixer settings, plant control settings, timer control settings, discharge control settings, etc.
- Up to 500 mixings can be stored.

## Control Functions

- Maximum number of scales: Standard: 4-ch, Maximum: 8-ch (Number of connected ingredients: up to 8 per scale)
- Number of ingredients  
Maximum 12 ingredients (20 ingredients with user customized MC Ladder)
- Mixer control function
- Manual measurement and discharge function
- 2-step batch + Jog flow measurement control and discharge gate control
- Accumulator/switch measurement function
- Option to release Add and Adm before or at same time as other ingredients
- BCD output function of settings values and gross weight value

## Calculation Function

- Calculates to compensate for surface moisture and capacity.

## Tally Function

- Accumulated daily and monthly totals for ingredient and mixing data can be provided.

## User Customization Function

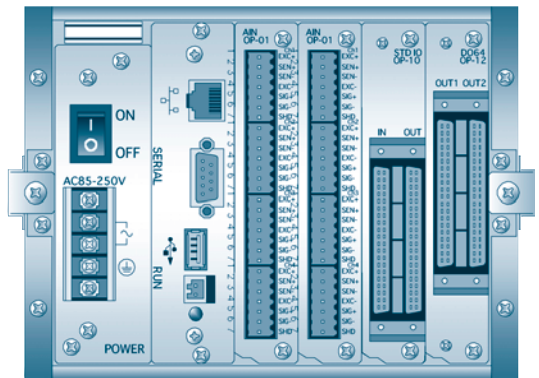
- Changes to the user's interface and control program are possible with VCDesigner (sold separately) and MC Ladder (sold separately).

## User-Friendly Graphical User Interface

- The stand-alone AD-4820 is capable of performing all weighing system functions. Using a PC makes this system more friendly.



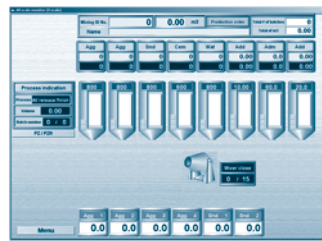
Front view



Rear view



AD-4820 screen



PC screen

## Recommended PC operation environment

### Windows® OS Operation Environment

- OS : Windows® 2000 Professional (SP4 or later version)  
Windows® XP Professional (SP1a or later version)  
Windows® XP Home Edition (currently being tested)
- CPU : Pentium-4 2GHz or more, Pentium-M 1.4GH or more
- HDD : With available space 800Mbyte or more
- Memory : 512Mbyte or more
- Browser : Microsoft Internet Explorer 6.0SP1 or later version

## Standard Specifications (4 scales, 12 ingredients)

- AD4820 Programmable Controller x 1
- OP-01 Analog Input Interface Board x 1
- OP-02 Load Cell Input Module x 4
- OP-10 Standard I/O Board x 1
- OP-77 Compact Flash (64Mbyte) for Advanced Batcher Controller x 1

## Expansion Specification (Max. 8 scales, 12 ingredients)

- OP-01 one additional Analog Input Interface Board  
4 input channels can be used in basic specifications.  
Up to 8 input channels can be supported with one additional interface board.
- OP-02 Max. four additional Load Cell Input Module  
input channels can be used in basic specifications.  
Additional OP-02 modules can support up to 8ch.
- OP-12 one additional OP-12 DO64 Board  
Add according to output item.

Specification	
Power	Full range (not necessary to switch voltage) 85V AC~250V AC 50/60Hz approx. 30VA
Unit size	192(W)x144(H)x149(D)mm (not including protruding part) 192(W)x144(H)x191(D)mm (including protruding part)
Unit weight Approx	2.8kg (AD-4820 with OP-01x1, OP-02x4, OP-10x1)
Panel cut dimensions	186x138mm
Temperature range for use	0 ~ 40°C
Display device	5.7 inch STN color liquid crystal
Touch panel	Analog film

**A&D** ...Clearly a Better Value

**A&D Company, Limited**

3-23-14 Higashi-Ikebukuro, Toshima-ku, Tokyo 170-0013 JAPAN  
Telephone:[81](3) 5391-6132 Fax:[81](3) 5391-6148  
http://www.aandd.jp

**A&D ENGINEERING, INC.**

1555 McCandless Drive, Milpitas, CA. 95035 U.S.A.  
Telephone:[1](408) 263-5333 Fax:[1](408) 263-0119

**A&D MERCURY PTY. LTD.**

32 Dew Street, Thebarton, South Australia 5031 AUSTRALIA  
Telephone:[61](8) 8301-8100 Fax:[61](8) 8352-7409

**A&D INSTRUMENTS LTD.**

Unit 24/26 Blacklands Way Abingdon Business Park,  
Abingdon, Oxon OX14 1DY United Kingdom  
Telephone:[44](1235) 550420 Fax:[44](1235) 550485

**<German Sales Office>**

Große Straße 13 b 22926 Ahrensburg GERMANY  
Telephone:[49](0) 4102 459230 Fax:[49](0) 4102 459231

**A&D KOREA Limited**

Manhattan Bldg. 8F, 36-2 Yoido-dong, Youngdeungpo-gu, Seoul, KOREA  
Telephone:[82](2) 780-4101 Fax:[82](2) 782-4280