



This document describes the procedure for installing A&D SeCUR on a PC.

Contents

1. Installation Procedure
2. Connecting the PC and Electronic Balance

1. Installation Procedure

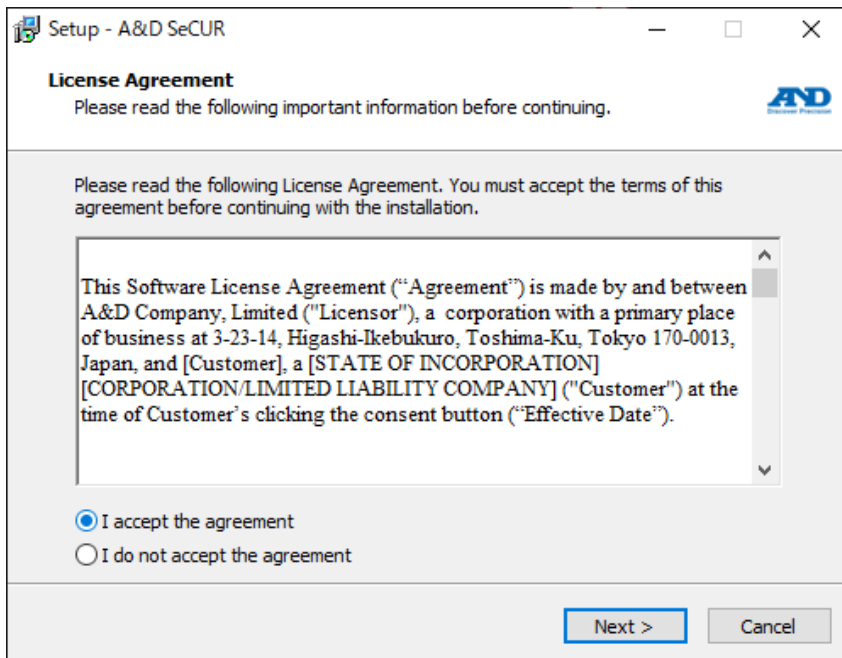
Recommended PC environment:

- Windows 10 Pro version 1903 or later, or Windows 11 Pro
- Display resolution: 1920×1080 (FHD)
* Set Windows display scaling to 100%
- RS-232C port, USB port, or Ethernet port for connecting the electronic balance

Download the installation file from our website.

Right-click the installation executable file "A&D_SeCUR_Vxxx.exe" and select "Run as administrator."

Agree to the license terms by checking "I accept the agreement," and then click "Next."



Enter your user name, organization name, and install key, then click “Next.”

Installation Key: **081C-18B1-BB00-70C8 (include hyphens)**

If the “Next” button is disabled, please check for errors in the entered install key.

Setup - A&D SeCUR

User Information
Please enter your information.

User Name:

Organization:

Install Key:

< Back Next > Cancel

Select the destination folder for installing A&D SeCUR and click “Next.”

Setup - A&D SeCUR

Select Destination Location
Where should A&D SeCUR be installed?

Setup will install A&D SeCUR into the following folder.

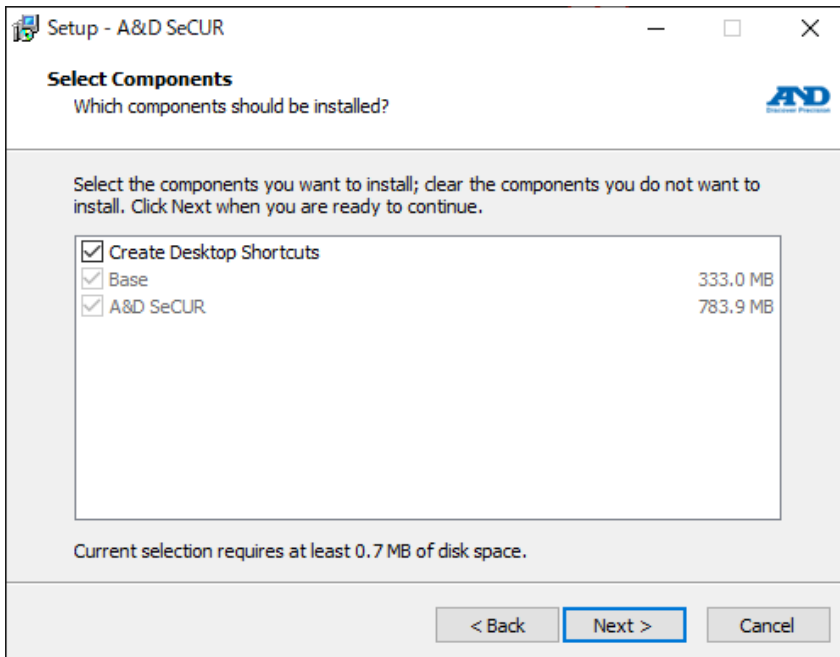
To continue, click Next. If you would like to select a different folder, click Browse.

C:\#ADT\#AnD_SeCUR Browse...

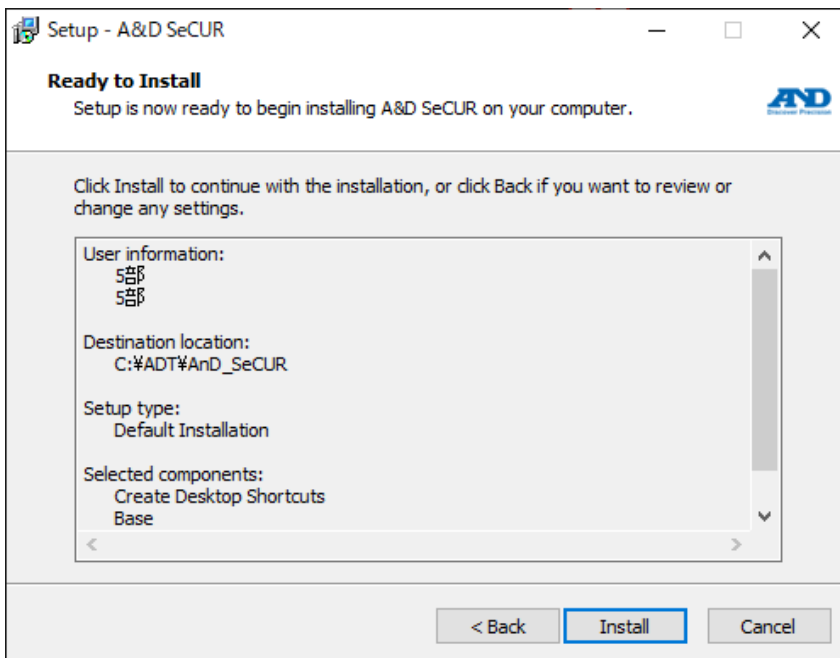
At least 0.7 MB of free disk space is required.

< Back Next > Cancel

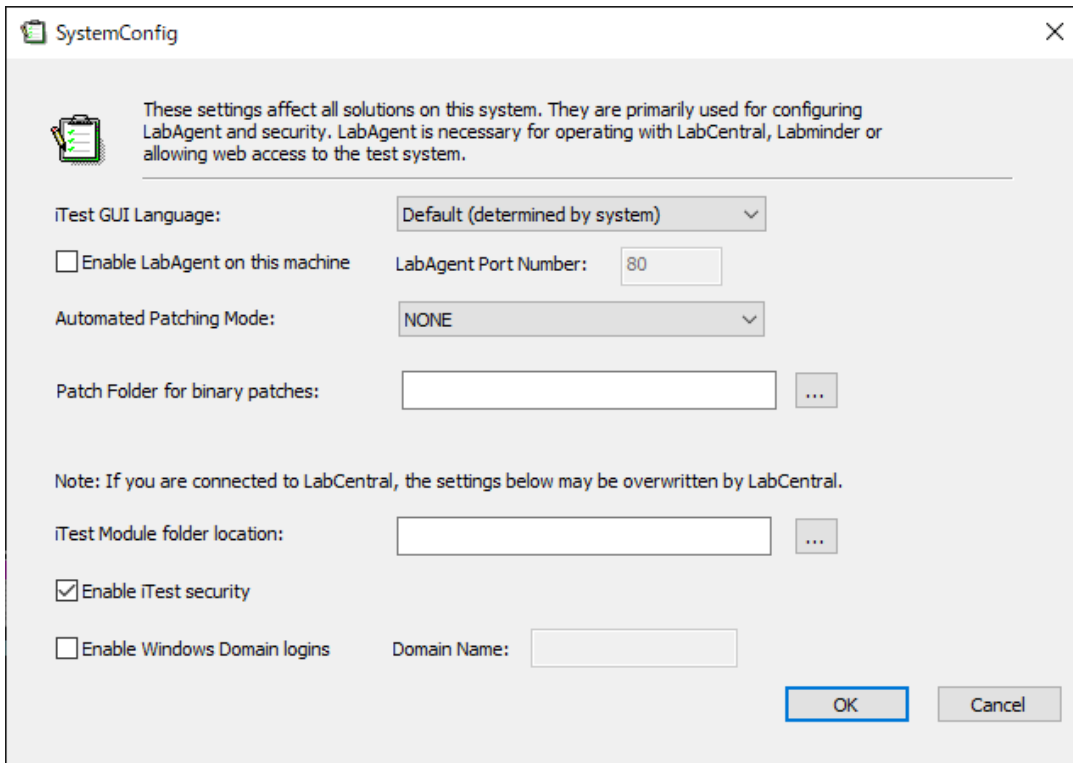
If you wish to create a desktop shortcut for A&D SeCUR, check the box and click "Next."



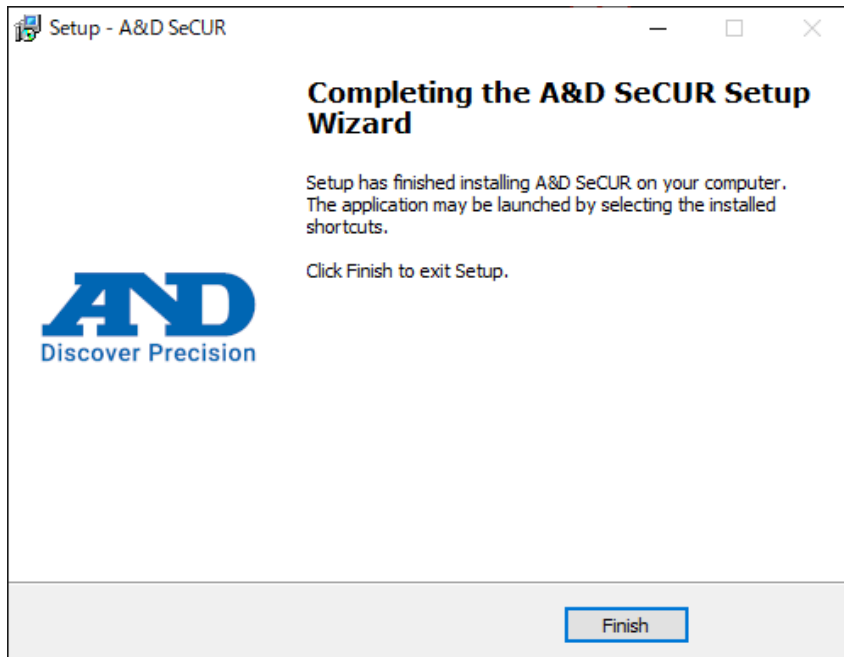
Once the setup is ready, click "Install" if everything is correct.



Click "OK" on the system configuration screen.



Click "Finish" to complete the installation.

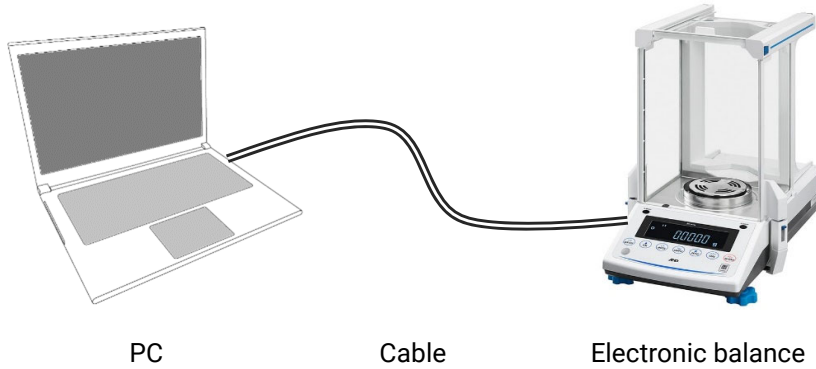


2. Connecting the PC and Electronic Balance

Connect the PC and electronic balance using a communication cable.

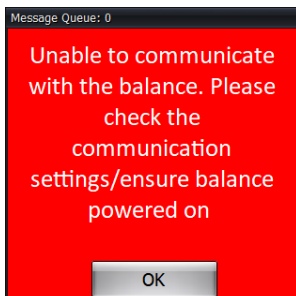
Connection types include USB, RS-232C, or LAN.

Refer to the table below for connection types and corresponding cables:



PC Connector	Cable	Balance Connector	Main Series
USB Type-A	USB cable included with the balance	USB Type-miniB or Type-C * Set the balance to bidirectional mode * Type-B not supported	BH, BA, GX-A/GF-A, GX-M/GF-M, GX-L/GF-L
USB Type-A	Optional USB converter cable set AX-USB-9P or AX-USB-25P	RS-232C D-sub 9-pin or D-sub 25-pin	BM, GH, GR, FZ/FX
RS-232C D-sub 9-pin	Optional RS-232C cable AX-KO2466-200 (9-pin) or AX-KO1710-200 (25-pin)	RS-232C D-sub 9-pin or D-sub 25-pin	BM, GH, GR, FZ/FX
LAN RJ45	Commercial LAN cable * Use a crossover cable for direct connection without a hub	LAN RJ45	BH-T, BA-T

On first launch, the system fails to communicate with the electronic balance and displays an error message. Log in with administrator privileges and configure the “Connection type” and “Serial port/IP Address” settings from the “Settings” menu.



End